

Railhead Scrub Preserve

Land Management Plan



**Conservation Collier Program
Collier County**

**2023 – 2033
10 Year Plan**

Table of Contents



LAND MANAGEMENT PLAN EXECUTIVE SUMMARY 3

PROPERTY DESCRIPTION 4

 LOCATION AND SITE DESCRIPTION 4

 NATURAL RESOURCES 4

Physical Resources 4

 BIOLOGICAL RESOURCES 5

Vegetation Communities 5

Wildlife Communities 6

 CULTURAL RESOURCES 6

MANAGEMENT PLAN 7

 GOALS 7

Vegetation Management 7

Wildlife Management 8

Public Access Management 9

Resource Protection Management 10

 ACQUISITION 12

 ACQUISITION HISTORY AND PLAN UPDATES FOR RAILHEAD SCRUB PRESERVE 12

 IMPLEMENTATION AND COSTS 13

Table 3: Implementation Timetable 13

Table 4: Projected Costs 13

APPENDIX 14

 APPENDIX 1: LEGAL DESCRIPTION 14

 APPENDIX 2: PHOTOSET- REPRESENTATIVE COMMUNITIES 15

 APPENDIX 3: PHOTOSET- REPRESENTATIVE GROUNDCOVER 16

 APPENDIX 4: PHOTOSET-NOTABLE WILDLIFE 17

 APPENDIX 5: PHOTOSET- RESOURCE PROTECTION CONCERNS.. 18

 APPENDIX 6: SPECIES TABLES 19

Land Management Plan Executive Summary

Lead Agency: Conservation Collier Program, Development Review Division, Growth Management Department

Folios: 00143120009, 00152600002

Total Acreage: 135 Acres

Management Authority: The Conservation Collier Program manages this parcel under authority granted by the Conservation Collier Ordinance 2002-63, as amended. Lands acquired with Conservation Collier funds are titled to "COLLIER COUNTY, a political subdivision of the State of Florida, by and through its Conservation Collier Program." The Board of County Commissioners of Collier County (BCC) established the Conservation Collier Program to implement the program and manage acquired lands. Conservation Collier holds management authority for the Railhead Scrub Preserve.

Designated Land Use: Preservation, restoration, and future passive public recreation. Management activities allowed are those necessary to preserve and maintain this environmentally sensitive land for the benefit of present and future generations.

Unique Features: Preservation of highly imperiled endemic oak scrub habitat within Collier County, dense populations of Florida gopher tortoise, rare plant species not found elsewhere in the County, urban large mammal populations.

Management Goals:

Vegetation: Maintain a preserve with a mosaic of high-quality flatwoods, wet prairies, hardwood forests, and endemic scrub with minimal fragmentation and less than 10% infestation of non-native vegetation.

Wildlife: Maintain a preserve with low-risk, contiguous access to a diversity of high-quality habitats by local and migratory common and imperiled wildlife species.

Public Access: Maintain a preserve that offers compatible, passive recreation and education opportunities to the public while preventing potential negative impacts to erosion-prone scrub habitat and listed species.

Resource Protection: Maintain a preserve without unauthorized access or activity through implementation of designated entrances, posted and secured preserve boundaries, regular law enforcement monitoring, and security enhancements that support existing wildlife movement requirements.

Public Input Opportunities:

A public meeting to review the plan will be held in October 2023 in addition to public CLAAC and BCC meeting participation opportunities.



Figure 2. Railhead Scrub Preserve.

Property Description

Location and Site Description



Figure 1. Conservation Collier Preserves 2023

The Railhead Scrub Preserve is an approximately 135-acre natural area located in the northwest corner of Collier County, south of the Railhead Industrial Park and East of Old US 41 (Section 10 Township 48 Range 25 and Section 30 Township 51 Range 27). The preserve protects some of the last remaining endemic rosemary scrub in Southwest Florida. Adjacent to the preserve is the Gulf Seminole Rail Line, industrial and commercial developments to the west, north and south, residential communities to the east, and the Aubrey Rogers Highschool to the Southeast. The current physical access to the preserve is from Old US 41 through Sun Century Road, a private road.

Natural Resources

Physical Resources

Physiography: The Railhead Scrub Preserve lies within the Gulf Coastal Lowlands physiographic province, characterized by low elevations and poor drainage. The landforms that make up these coastal lowlands include coastal and sand dune ridges and relic spits and bars with intervening coast-parallel valleys consisting of poorly drained swampy areas with little recharge. Relic coastal dune ridges are the most prominent geographic feature in the general vicinity of this site.

Topography: Railhead Scrub is in the Southwestern Slope region of the South Florida Water Management District (SFWMD). The topography of the area is relatively flat with an average elevation of 15 feet above sea level and slopes gently westward toward the Gulf of Mexico. Surface water percolates directly into the uncovered ground or it collects in natural depressions and manmade ponds on adjacent properties.

Soils: According to the Soil Survey of the Collier County Area 1990, soils

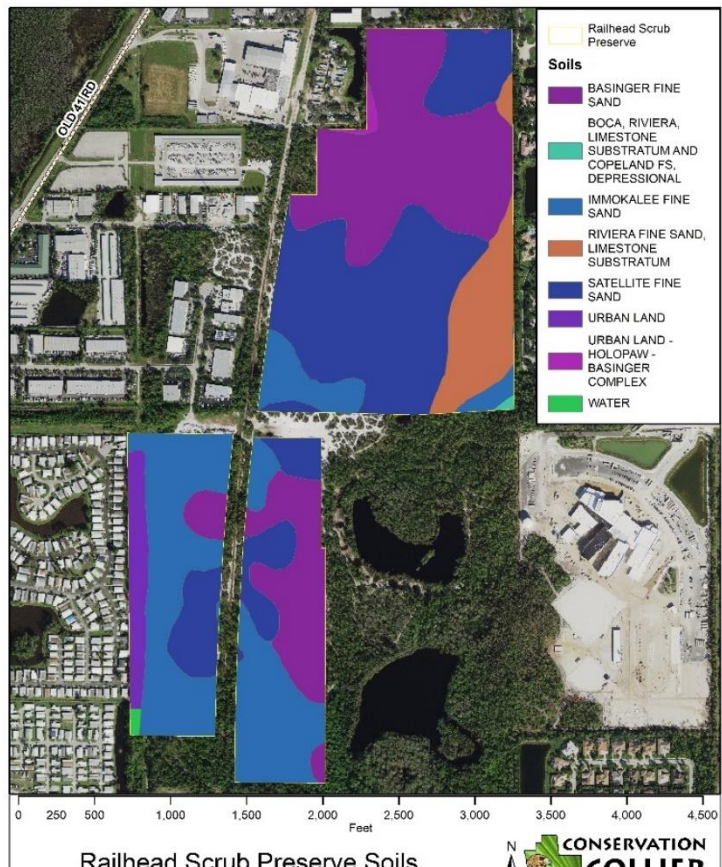


Figure 3. Railhead Scrub Soils

mapped at the Railhead Scrub Preserve include Satellite Fine Sand; Basinger Fine Sand; Immokalee Fine Sand; Riviera Fine Sand, Limestone Substratum; Urban Land Holopaw Basinger Complex; and Boca, Riviera, Limestone Substratum and Copeland Fine Sand, Depressional. Satellite Fine Sand units are situated on low-lying coastal ridges and correspond to the Xeric Uplands. Basinger and Riviera Fine Sands are hydric soils typical of slightly depressional drainage-ways with poorly defined outlets such as flats and sloughs. Immokalee Fine Sand units are associated with pine flatwoods communities.

Hydrology/Water Management: Near the surface, the aquifer is highly permeable and the groundwater flows toward the west. Groundwater levels have gone down during the recent decades due to drainage on a regional scale and water management for development purposes. This trend may be very difficult to control and will gradually reduce the extent of the preserve that floods during the summer months and reduce the duration the preserve wetlands are flooded during the year.

Climate: The average annual temperature for the coastal portion of Collier County is approximately 75° Fahrenheit, warmest in July and August. Two-thirds of the annual rainfall occurs in the wet season from May to October. Thunderstorms are frequent during the wet season occurring every two out of three days between June and September. The hurricane season extends from June through November with peak activity occurring in September and October when ocean temperatures are highest.

Biological Resources

Vegetation Communities

Table 1. Vegetation Communities, Acreage, % Cover

Railhead Scrub Plant Communities and Cover			
FLCC Community	Acreage	% Cover	Representative Species Common Name *Full Species Name Can Be Found in Table #
Oak Scrub	51.3	38.0%	Sand-live oak, Chapman's oak, Florida rosemary, Florida slash pine, saw palmetto, hog plum, Coastalplain goldenaster, prickly pear, Southern wiregrass, cardinal airplant, deer lichen
Scrubby Flatwoods	34.7	25.7%	Florida slash pine, saw palmetto, rusty lyonia, tarflower, wild pennyroyal, Southern wiregrass
Mesic Flatwoods	19.3	14.3%	Florida slash pine, saw palmetto, cabbage palm, Southern wiregrass, broomsedge
Wet Prairie	9.6	7.1%	Bushy bluestem, broomsedge, Florida slash pine, blue maidencane, yellow-eyed grass
Wet Flatwoods	9.4	7.0%	Florida slash pine, cabbage palm, wax myrtle, saw palmetto, live oak, red root, maidencane, dollarweed
Mowed Grass	1.7	1.3%	Mixed grasses and forbs in maintained clearings
Mixed Wetland Hardwoods	4.3	3.2%	Live oak, laurel oak, cabbage palm, myrsine, dollarweed, milkwort
Cypress	2.7	2.0%	Bald cypress, cabbage palm, dahoon holly, myrsine, swamp fern, tillandsia spp.
Slash Pine Swamp Forest	1.0	0.8%	Florida slash pine, bald cypress, myrsine, wax myrtle, dahoon holly
Ditch	0.4	0.3%	Stormwater management
Shrub and Brushland	0.3	0.2%	Carolina willow, grapevine, cabbage palm, saw palmetto, Florida slash pine, laurel oak
Bare Soil	0.1	0.1%	N/A

Four hundred nine (497) plant species have been recorded at Railhead Scrub Preserve (Appendix 2). Of these 497 species, 385 (77.4%) are native to the site and 112 are exotic (22.5%). 6 species are considered Imperiled or very rare/restricted according to Florida Natural Areas Inventory (FNAI) while 13 species are considered state endangered or threatened.

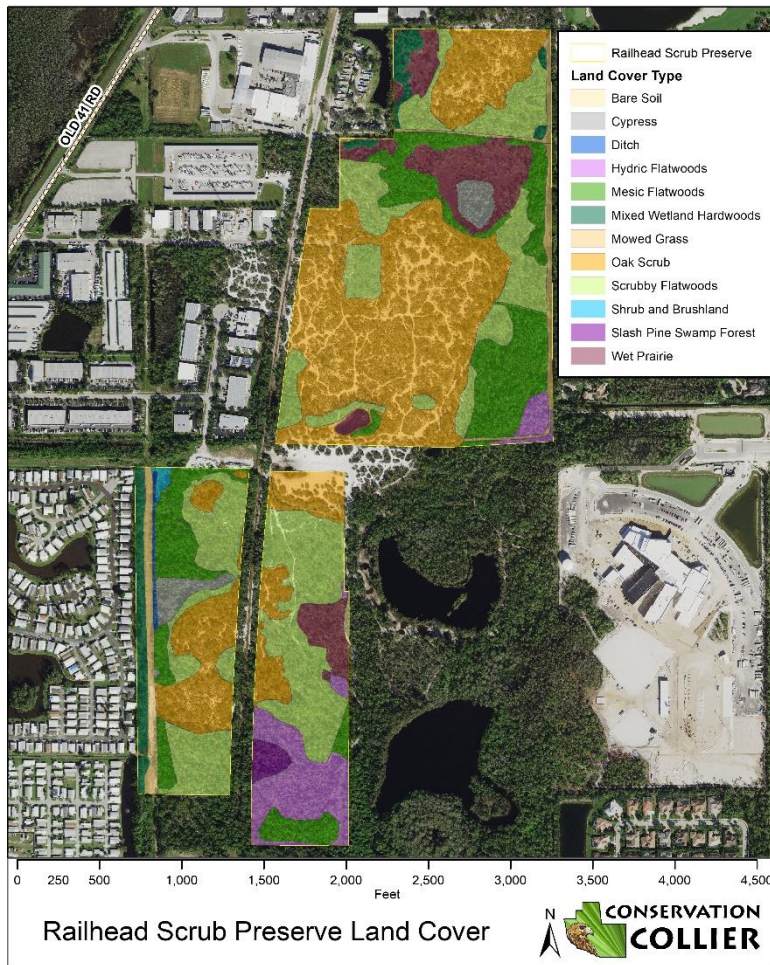


Figure 4. Railhead Scrub Preserve Land Cover

Wildlife Communities

Railhead Scrub Preserve supports a significant population of upland dependent wildlife species. Wildlife sightings include observations by Conservation Collier staff, remote camera studies, and data collected through partnership with Florida Gulf Coast University (FGCU) research students and faculty. Wildlife species observed utilizing the preserve are listed in Appendix 6. Observations of wildlife tracks and remote camera photos indicate wildlife species move regularly between the three separately fenced parcels of the preserve, crossing private property and field fencing along the way. Tracks are routinely observed of Florida black bear with cubs as well as adult

bobcats with kittens travelling through the preserve, as well as photos collected of new white-tailed deer fawns indicating these species likely use the preserve or immediate surrounding area for denning and/or raising young. Florida gopher tortoise tracks observed between the North and South units of the preserve indicate preserve tortoises use seasonal burrows throughout the separately fenced units and travel beneath the fencing to reach them.

Rare scrub habitat like the type found within Railhead Scrub Preserve can provide habitat for a diversity of rare and endemic species that specialize in scrub habitat such as the Florida scrub lizard, Eastern Indigo snake, Florida scrub jay. Staff will continue to seek out partnerships and research opportunities to monitor for the presence of these species as well as other federally and state-imperiled species.

Cultural Resources

Archaeological Resources: There are no known archaeological “finds” on this site. The property is not within an area of historical and archaeological probability, and no historical or archaeological sites appear to be present in the property.

The County will notify the Division of Historical Resources immediately if evidence is found to suggest any archaeological or historic resources are present at the Railhead Scrub Preserve. If any artifacts are observed on-site, staff shall cordon off the area, and a

professional survey and assessment shall be instituted. The archaeologist shall prepare a report outlining results of the assessments and issue recommendations to County staff about management of any sites discovered, per provisions of the Land Development Code Section 2.2.25. This report shall be sent to the Division of Historical Resources. The County shall cooperate fully with direction from the Division of Historical Resources on the protection and management of archaeological and historical resources. The management of these resources will comply with the provisions of Chapter 267, Florida Statutes, specifically Sections 267.061 2 (a) and (b). The collection of artifacts or the disturbance of archaeological and historic sites within the Railhead Scrub Preserve is prohibited unless prior authorization has been obtained from the Collier County Board of County Commissioners and the Department of State, Division of Historical Resources.

Management Plan

Goals

Vegetation Management

Goal: Maintain a preserve with a mosaic of high-quality flatwoods, wet prairies, hardwood forests, and endemic scrub with minimal fragmentation and less than 10% infestation of non-native vegetation.

Invasive Plant Removal: A list of exotic plant species within the preserve is located in Appendix 6. Initial exotics removal projects in the early 2000s targeted species ranked within Category I and II on the FISC List of Invasive Plant Species including control of exotic melaleuca (*Melaleuca quinquenervia*) and old-world climbing fern (*Lygodium microphyllum*) from preserve wetlands, and downy rose-myrtle (*Rhodomyrtus tomentosa*), earleaf acacia (*Acacia auriculiformis*), and Brazilian pepper (*Schinus terebinthifolia*) from preserve uplands. Management of exotics will continue in maintenance phase with regular mechanical and herbicidal treatments of the preserve to enhance restoration of native plant species diversity. Measures will be taken to work with adjacent property owners to reduce seed and spore source of exotics along the preserve boundary.

Native Plant Restoration: Railhead Scrub Preserve protects some of the last remaining local genetics of endemic scrub and upland species in Collier County. In an effort to support plant diversity on site and preservation of endemic scrub species genetics, Conservation Collier partnered with the Naples Botanical Garden in 2021 to initiate a multi-year Scrub Restoration and Seed Collection project to research the specific diversity and needs of the site, collect plant material for conservation seed-banking as well as in-situ growing trials for eventual replanting at the site to restore areas of habitat lost to historic illegal off-road vehicle access. Collections occur throughout the year for foundational species that offer initial soil stabilization and encourage regrowth of bare soil areas through the natural seedbank. This project is phased to include initial collections and growth trials, followed by restoration planting on-site. In addition to native plantings and restoration, efforts will be made to repair the effects of rutting and elevation changes to the site as a result of illegal vehicle access that alter the hydrology of the scrub and plant species found within the area of historic impact.

Prescribed Fire and Mechanical Reduction: Railhead Scrub Preserve is located within the Urban lands of North Naples. Plant communities and wildlife within the preserve are fire-dependent for survival and prescribed fire applied by trained personnel is the most effective and cost-efficient management tool for preserving the rare plant communities at this site.

The urban location of this preserve and proximity to smoke-sensitive areas requires additional coordination, planning, and adjacent landowner education to apply fire within the managed units of the preserve. Mechanical reduction of heavy fuels as a result of historic fire suppression, installation of small acreage defensible burn unit fire lines, and boundary line clearing will be carried out to assist with the application of fire at the site. Trained fire personnel along with interagency partners will conduct small acreage prescribed burns at the site in accordance with the regulations and authorizations set forth by the Florida Forest Service.

Hydrologic Restoration

Natural hydrology plays a critical role in defining plant and animal species that persist within the preserve. Alterations in water table levels, unintentional ponding, and introduction of novel sources of water flow or loss to the site as a result of surrounding development and land use changes can pose detrimental effects to imperiled burrowing species like the Florida gopher tortoise, and rare endemic scrub plants that rely on specific water conditions to flourish. Water management at the site should seek to preserve natural conditions that have defined this imperiled scrub habitat to support its persistence and implement infrastructure accordingly.

Wildlife Management

Goal: Maintain a preserve with low-risk, contiguous access to a diversity of high-quality habitats by local and migratory common and imperiled wildlife species.

Habitat Improvement: Railhead Scrub Preserve supports a large diversity of wildlife species due to the presence of rare scrub habitat, xeric and wetland soils, and a matrix of wetland and upland plant communities throughout. The preserve also sustains isolated pockets of rare scrub that could serve as future stopover habitat to promote range expansion of scrub endemic species travelling between remnant habitat in central Florida and the Rookery Bay National Estuarine Research Reserve. The preserve will be managed to support wildlife populations through the protection and enhancement of forage availability and quality, denning and nesting habitat, historic hydroperiods, parcel connectivity and habitat access, and the reduction of negative impacts resulting from incompatible use of the site.



Figure 5. Railhead Scrub Preserve Habitat

Connectivity and Movement: The preserve provides urban refugia for large and small mammals, birds, reptiles, amphibians, and insects. Increasing development, land use changes surrounding this site, future transportation development projects, fencing, light and sound disturbance can impact the imperiled and common species that rely on the preserve and alter wildlife movement or activity within the site. Efforts will be taken to reduce land use change impacts to the preserve in the coming years including heightened security and enforcement of non-sanctioned activities, wildlife-friendly fencing installation, preservation of existing wildlife corridors through infrastructure enhancements like underpasses, culverts, and crossings, and positioning public use trails in areas that limit

soil erosion and listed species impacts.

Wildlife Mortality Reduction: Plans for an extension of the existing Veteran’s Memorial Boulevard from the Audrey Rogers High School west to US 41 are included in the Collier MPO 2045 Long Range Transportation Plan. This roadway extension is set to bisect the northern and southern parcels of the Railhead Scrub Preserve which currently provide continuous habitat access for wildlife through undeveloped oak scrub community. Fencing in conjunction with a wildlife underpass, suitable for large mammals like white-tailed deer and Florida black bear with a raised shelf design for wet season inundation is recommended to be incorporated into the design plans for the Veteran’s Memorial Blvd extension to preserve the connectivity for wildlife between preserve parcels and significantly reduce wildlife-collision risks to the public utilizing the road expansion area. Adjacent to the western preserve boundary, and within the footprint of the planned roadway extension project is the Gulf Seminole Rail Line. In conjunction with a vehicular railway crossing to accommodate the road expansion project, infrastructure to avoid mortality of state-imperiled Florida gopher tortoise and other wildlife travelling between the northern and southern parcels of the preserve via the rail crossing should be considered and implemented.

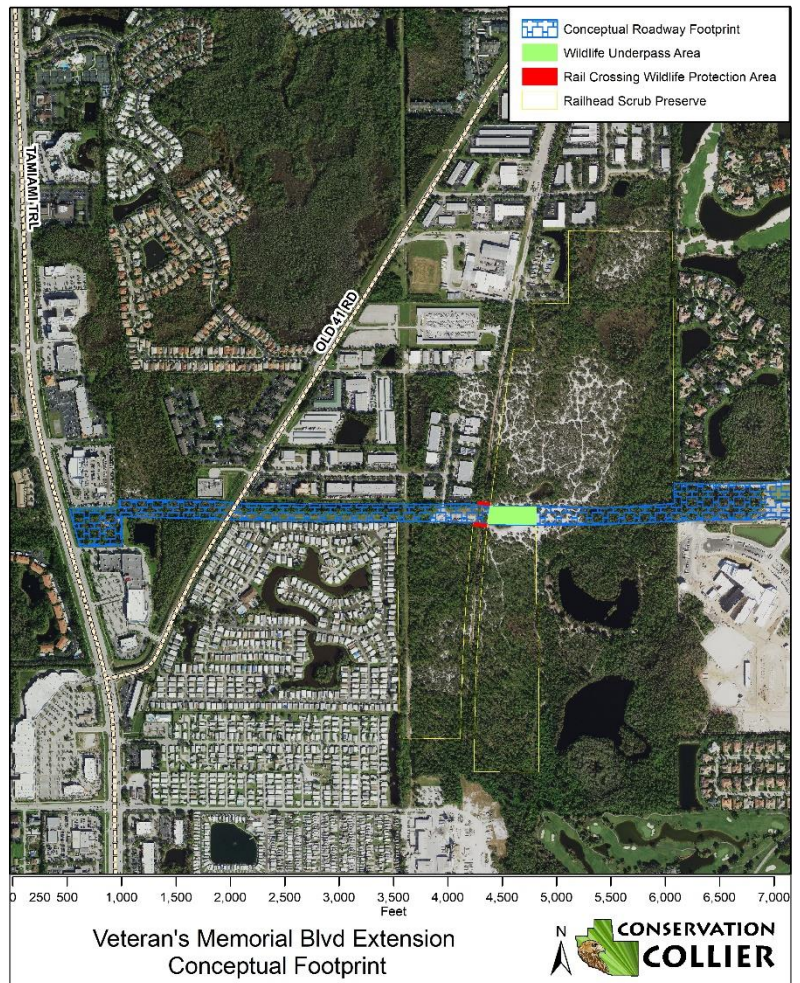


Figure 6. Conceptual Footprint-Veteran’s Memorial Blvd Extension

Monitoring: Conservation Collier staff deploy a network of remote cameras to monitor the site for wildlife utilization and threats to natural resource protection like illegal offroad vehicle access. Staff partner with research institutions such as the Florida Gulf Coast University and Fish and Wildlife Conservation Commission Research Institute to conduct regular monitoring for imperiled species at the site. Wildlife Surveys for common and migratory species will continue to be carried out by preserve staff on a regular basis. Baseline monitoring with cameras and track surveys will be conducted to assist with planning for future impact reduction to wildlife in light of planned transportation infrastructure development. Monitoring for wildlife at the preserve will continue throughout construction and post-construction to assess for and respond to any future, unanticipated impacts.

Public Access Management

Goal: Maintain a preserve that offers compatible, passive recreation and education opportunities to the public while preventing potential negative impacts to erosion-prone scrub habitat and listed species.

Recreation Opportunities: Conservation Collier preserves provide nature-based recreation opportunities to the community where compatible with resource protection goals for individual sites. Currently without a suitable site to provide to public infrastructure such as a parking lot or sidewalk access, Railhead Scrub Preserve public access is compatible with pre-approved staff-led small group educational tours and researcher access with a permit. Following partnership or acquisition of a location suitable for public parking development and preserve boundary access, Railhead Scrub Preserve may be compatible with low-impact nature-based activities such as hiking, wildlife viewing, nature photography, education tours, and research. Large group events or sports activities are deemed incompatible with the resource protection goals within the preserve. Public access infrastructure will be incorporated only within areas of the preserve deemed less sensitive to erosion, without listed species impacts, and compatible with the natural resource management goals of the property.

Transportation: The Veteran’s Memorial Blvd Extension transportation project and construction of the Aubrey Rogers High School located ¼ mile to the east of the preserve boundary offer opportunities to incorporate enhanced public access to the future management plan of the site. In partnership with the Collier County Public Schools, a future parking area with limited spaces designated preserve access use will be provided once roadway construction is complete. Once complete, sidewalk access along the Veteran’s Memorial Boulevard Extension will provide greater feasibility for foot traffic access to the site.

Amenity Installation and Enhancement:

Future public access enhancements will be completed once construction of the roadway extension and parking area are constructed and may include a trail network, designated entrance gate and maintenance access infrastructure, pedestrian fence crossings, educational kiosk, entrance sign, educational signage, benches, and shade structures. Areas of planned trail that cross over sensitive scrub soils with Florida rosemary and imperiled Florida gopher tortoise burrows may incorporate raised boardwalk-style design to reduce erosion impacts from pedestrian access. Raised trail designs will aim to mitigate negative impacts to ungulate access to the site, impacts to burrowing and listed scrub species and be compatible with the prescribed fire management goals at the preserve.

Resource Protection Management

Goal: Maintain a preserve without unauthorized access or activity through implementation of designated entrances, posted and secured preserve boundaries, regular law enforcement monitoring, and security enhancements that support existing wildlife movement requirements.

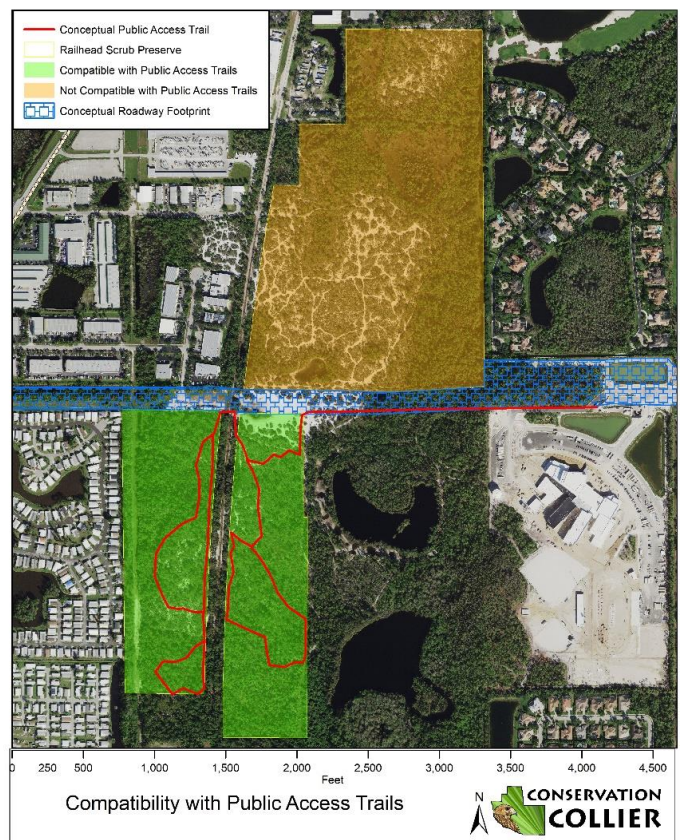


Figure 7. Conceptual Public Access

Illegal Trespass and Dumping: Railhead Scrub Preserve today protects lands in a region of the county that has historically experienced heavy pressure from off-road vehicle access, illegal nighttime gathering, swimming, and unsanctioned target practicing with firearms. County ordinance 2011-38 regulates and specifies legal utilization of the Railhead Scrub Preserve lands and provides an enforcement mechanism to prevent illegal trespass, property damage, off-road vehicle trespass, illegal fires, dumping, illegal use of firearms, harm to the plant, wildlife, and natural resources at the site. Security camera monitoring, no trespassing sign posting, boundary fence line maintenance and repairs, and on-site inspections are carried out regularly by Conservation Collier staff working in partnership with the Collier County Sheriff's Office and Florida Fish and Wildlife Conservation Commission to reduce, prevent, and curtail historic illegal access at the site from continuing. Illegal trespass activities at the site pose significant risk to the preservation of rare and sensitive natural resources that the preserve was purchased to protect.

Infrastructure Damage: Infrastructure damage repair continues to be one of the staff-intensive maintenance efforts at the site. Historically, law enforcement capabilities at the site have been hampered by lack of off-road vehicles to navigate the scrub sugar sand for enforcement, lack of clarity on land ownership and enforcement rights, and lack of no-trespassing sign or boundary delineation fencing in the right-of-way (ROW) are between the Railhead Scrub Preserve. Staff will continue to seek opportunities to enhance law enforcement access to the site for monitoring and enforcement, regulation and boundary posting, and partnership with adjacent landowners where illegal trespass activities are initiating. In addition, the program will replace existing sub-standard security fencing with more effective infrastructure while making effort to avoid impacts to wildlife through design and implementation in 2024.

Soil Disturbance/Erosion Prevention: Soil disturbance and erosion from incompatible illegal site access, along with historic exclusion of a natural fire regime from the site, continues to be one of the greatest threats to the preservation of the imperiled scrub habitat within Railhead Scrub Preserve. Rare, endemic scrub vegetation is slow-growing and loss of plant cover in sites as a result of soil disturbance poses restoration challenges for recovery. Ruts caused by non-sanctioned tire tread at the site alters the elevation and hydrology and the plant species that grow within the area. Outside of the boundary and within the ROW between the North and South preserve parcels, off-road vehicle disturbance has contributed to a loss of over 65% coverage of scrub vegetation and suitable habitat for scrub-dependent species. Staff will continue to consider soil erosion threats and avoidance measures when planning bare soil restoration plantings, future public access compatibility, and security enhancement needs at the site.



Figure 8. Erosion of Scrub Habitat and Resulting Bare Soil

Enforcement and Monitoring: Currently, the program relies heavily on monitoring and

support from the Collier County Sherriff’s Office Agriculture and Mounted Patrol and Aviation Unit for enforcing illegal activity at the site as a result of access limitations caused by the scrub soil type. Staff will continue to seek opportunities to enhance security and monitoring at the site to safeguard the preserve resources.

Acquisition

Table 2: Acquisition History and Plan Updates for Railhead Scrub Preserve

Acquisition History and Plan Updates for Railhead Scrub Preserve	
Year	Benchmark
2003	Appraisal and Assessment to Determine Compliance with Initial Screening Criteria, including Biological and Hydrological Characteristics
2004	Railhead Scrub Preserve property (northern 80 acres) purchased by Conservation Collier
2006	RR Land Trust (55 acres) property initially assessed
2007	RR Land Trust parcel purchased and incorporated into Railhead Scrub Preserve

No additional parcel acquisitions have been completed within the Railhead Scrub Preserve complex since 2007. Conservation Collier is a land buying program that purchases undeveloped, ecologically important lands throughout the County at risk from development to establish community nature preserves. The program has been in existence since 2003 and currently protects over 22 nature preserves from Marco Island to Immokalee. Following a voter referendum in 2020 that received 77% approval, the program resumed land purchasing at the direction of the Board of County Commissioners and is actively accepting applications from willing sellers and nominations from members of the public through an online form located at www.ConservationCollier.com.

Implementation and Costs

Table 3: Implementation Timetable

Management Activity Timetable											
Activity	2023/2024	2025	2026	2027	2028	2029	2030	2031	2032	2033	2034
Exotic Plant Maintenance	X	X	X	X	X	X	X	X	X	X	X
Mechanical Reduction	X					X					
Prescribed Fire Management	X	X	X			X			X		
Restoration Planting	X	X	X	X	X						
Wildlife Monitoring and Research	X	X	X	X	X	X	X	X	X	X	X
Fence Replacement	X		X								
*On-Site Tortoise Relocation			X								
Boundary Sign Install & Maintenance	X										
*Wildlife Underpass Maintenance & Monitoring			X	X	X	X	X	X	X	X	X
*Public Access Amenity Installation			X	X							
Trail/Amenity Maintenance			X	X	X	X	X	X	X	X	X
Site Access Equipment (ATV, winches)	X										
Debris Removal	X	X	X	X	X	X	X	X	X	X	X
Fencing Repair/ Security Barrier Repair	X	X	X	X	X	X	X	X	X	X	X

*Activity Implementation Dependent on Veteran’s Memorial Blvd Extension Construction Timeline

Table 4: Projected Costs

Item	Funding Source	Projected Cost	Occurrences
Exotic Plant Maintenance (contract)	CC, FWC	\$27,000	10
*Mechanical Mowing (contract)	CC	\$91,437.50	1
Site Access Equipment (ATV, Equipment Winches)	CC	\$11,000	1
Prescribed Burns (In-House)	CC	\$3,125	13
*Fireline Discing (contract)	CC	\$1900	5
Restoration Planting (contract, in-kind)	CC, USFWS	\$1,500	5
Wildlife Monitoring and Research (contract, in-house, FGCU)	CC	\$1500	10
Surveys and Fence Replacement (contract)	CC	\$67,000	2
On-Site Tortoise Relocation	CC	\$9435	1
Boundary Sign Install & Maintenance	CC	\$50	50
Wildlife Underpass Maintenance & Monitoring (In-House)	CC	\$250	10
*Public Access Trail Installation (contract)	CC	\$5000	1
*Public Access Amenity Installation (gates, benches, kiosk, education signs) (contract)	CC	\$15,000	1
*Trail/Amenity Maintenance (In-House)	CC	\$2211.52	4
*Debris Removal/Cleanups (contract)	CC	\$5000	5
*Fencing Repair/ Security Barrier Repair (In-house, contract)	CC	\$2500	50
Total Projected Costs Over 10 Years		\$789,844	

*Costs subject to increase/decrease upon market changes. Cost projection factoring in current management equipment assets- future acquisition of in-house management equipment would decrease contracted cost projection

Appendix

Appendix 1: Legal Description

PROPERTY TAX IDENTIFICATION NUMBER: 00152920009

LEGAL DESCRIPTION:

THE SOUTH 200 FEET OF THE NORTH 2030 FEET OF THE WEST HALF (W 1/2) OF THE NORTHEAST QUARTER (NE ¼) OF SECTION 15, TOWNSHIP 48 SOUTH, RANGE 25 EAST, OF COLLIER COUNTY FLORIDA; LYING WEST OF THE ATLANTIC COAST LINE RAILROAD

RIGHT-OF-WAY.

2.35 acres more or less.

AND

PROPERTY TAX IDENTIFICATION NUMBER: 00152800006

LEGAL DESCRIPTION:

THE SOUTH 347 FEET OF THE NORTH 2337 FEET OF THE WEST HALF (W 1/2) OF THE NORTHEAST QUARTER (NE ¼) OF SECTION 15, TOWNSHIP 48 SOUTH, RANGE 25 EAST, OF COLLIER COUNTY FLORIDA; LYING EAST OF THE ATLANTIC COAST LINE RAILROAD RIGHT-OF-WAY.

5.54 acres more or less.

AND

PROPERTY TAX IDENTIFICATION NUMBER: 00152760007

LEGAL DESCRIPTION:

THE SOUTH 350 FEET OF THE NORTH 1990 FEET OF THE WEST HALF (W 1/2) OF THE NORTHEAST QUARTER (NE ¼) OF SECTION 15, TOWNSHIP 48 SOUTH, RANGE 25 EAST, OF COLLIER COUNTY FLORIDA; LYING EAST OF THE ATLANTIC COAST LINE RAILROAD RIGHT-OF-WAY.

5.69 acres more or less.

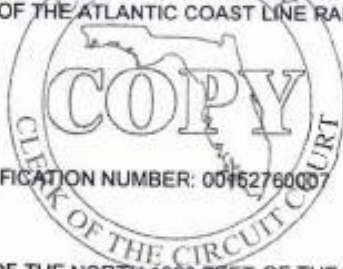
AND

PROPERTY TAX IDENTIFICATION NUMBER: 00152600002

LEGAL DESCRIPTION:

THE NORTH 405 FEET OF THAT PORTION OF THE NORTH 780 FEET OF THE NORTHWEST QUARTER (NW ¼) OF THE NORTHEAST QUARTER (NE ¼) OF SECTION 15, TOWNSHIP 48 SOUTH, RANGE 25 EAST, OF COLLIER COUNTY FLORIDA; LYING EAST OF THE ATLANTIC COAST LINE RAILROAD RIGHT-OF-WAY; LESS AND EXCEPTING THE EAST 30 FEET THEREOF, AND LESS AND EXCEPTING THE NORTH 50 FEET THEREOF.

4.43 acres more or less.



Appendix 2: Photoset- Representative Communities



Oak Scrub



Oak Scrub



Scrubby Flatwoods



Scrubby Flatwoods



Cypress



Wet Prairie



Hydric Flatwoods



Mesic Flatwood



Bare Soil

Appendix 3: Photoset- Representative Groundcover



Chapman's Blazing Star



Florida Rosemary



Prickly Pear Cactus



Tarflower



Curtiss' Milkweed



Spikemoss



Gopher Apple



Whitemouth Dayflower



Yellow-eyed grass

Appendix 4: Photoset-Notable Wildlife



Florida gopher tortoise- ST



White-tailed deer



Florida black bear



Coyote



Cottontail rabbit



Bobcat



Southern bald eagle



Eastern bluebird



Swallow-tailed Kite

Appendix 5: Photoset- Resource Protection Concerns



Illegal Trespass Via Railroad



Boundary Fence Damage



Rare Habitat Soil Erosion



Illegal Dumping



Off-Road Trespass Damage



Habitat Fragmentation



Vehicle Wildlife Mortalities



Wildlife Crossings



Illegal Brush Fires

Appendix 6: Species Tables

Table 5. Bird Species Observed at Railhead Scrub Preserve

Common Name	Scientific Name	Common Name	Scientific Name
American crow	<i>Corvus brachyrhynchos</i>	house sparrow	<i>Passer domesticus</i>
American kestrel	<i>Falco sparverius</i>	house wren	<i>Troglodytes aedon</i>
barn swallow	<i>Hirundo rustica</i>	killdeer	<i>Charadrius vociferus</i>
belted kingfisher	<i>Megaceryle alcyon</i>	laughing gull	<i>Leucophaeus atricilla</i>
black vulture	<i>Coragyps atratus</i>	least bittern	<i>Ixobrychus exilis</i>
black-bellied whistling duck	<i>Dendrocygna autumnalis</i>	least tern	<i>Sternula antillarum</i>
black-whiskered vireo	<i>Vireo altiloquus</i>	limpkin	<i>Aramus guarauna</i>
blue jay	<i>Cyanocitta cristata</i>	little blue heron	<i>Egretta caerulea</i>
blue-gray gnatcatcher	<i>Poliophtilia caerulea</i>	loggerhead shrike	<i>Lanius ludovicianus</i>
boat-tailed grackle	<i>Quiscalus major</i>	mottled duck	<i>Anas fulvigula</i>
broad-winged hawk	<i>Buteo platypterus</i>	mourning dove	<i>Zenaida macroura</i>
brown thrasher	<i>Toxostoma rufum</i>	muscovy duck	<i>Cairina moschata</i>
carolina wren	<i>Thryothorus ludovicianus</i>	Northern cardinal	<i>Cardinalis</i>
cattle egret	<i>Bubulcus ibis</i>	Northern flicker	<i>Colaptes auratus</i>
chimney swift	<i>Chaetura pelagica</i>	Northern mockingbird	<i>Mimus polyglottos</i>
chuck-will's-widow	<i>Caprimulgus carolinensis</i>	Northern parula	<i>Setophaga americana</i>
common grackle	<i>Quiscalus quiscula</i>	osprey	<i>Pandion haliaetus</i>
common ground dove	<i>Columbina passerina</i>	palm warbler	<i>Setophaga palmarum</i>
common moorhen	<i>Gallinula chloropus</i>	pileated woodpecker	<i>Dryocopus pileatus</i>
common nighthawk	<i>Chordeiles minor</i>	pine warbler	<i>Setophaga pinus</i>
common yellowthroat	<i>Geothlypis trichas</i>	prairie warbler	<i>Setophaga discolor</i>
cooper's hawk	<i>Accipiter cooperii</i>	purple martin	<i>Progne subis</i>
double-crested cormorant	<i>Phalacrocorax auritus</i>	red-bellied woodpecker	<i>Melanerpes carolinus</i>
downy woodpecker	<i>Picoides pubescens</i>	red-shouldered hawk	<i>Buteo lineatus</i>
Eastern bluebird	<i>Sialia sialis</i>	red-tailed hawk	<i>Buteo jamaicensis</i>
Eastern phoebe	<i>Sayornis phoebe</i>	red-winged blackbird	<i>Agelaius phoeniceus</i>
Eastern screech owl	<i>Megascops asio</i>	roseate spoonbill	<i>Platalea ajaja</i>
Eastern towhee	<i>Pipilo erythrophthalmus</i>	sharp-shinned hawk	<i>Accipiter striatus</i>
Eurasian collared-dove	<i>Streptopelia decaocto</i>	Southern bald eagle	<i>Haliaeetus leucocephalus</i>
European starling	<i>Sturnus vulgaris</i>	swallow-tailed kite	<i>Elanoides forficatus</i>
fish crow	<i>Corvus ossifragus</i>	tricolored heron	<i>Egretta tricolor</i>
glossy ibis	<i>Plegadis falcinellus</i>	tufted titmouse	<i>Baeolophis bicolor</i>
gray catbird	<i>Dumetella carolinensis</i>	turkey vulture	<i>Cathartes aura</i>
great blue heron	<i>Ardea herodias</i>	white ibis	<i>Eudocimus albus</i>
great crested flycatcher	<i>Myiarchus crinitus</i>	white-eyed vireo	<i>Vireo griseus</i>
great egret	<i>Ardea alba</i>	wood stork	<i>Mycteria americana</i>
green heron	<i>Butorides virescens</i>	yellow-bellied sapsucker	<i>Sphyrapicus varius</i>
hairy woodpecker	<i>Leuconotopicus villosus</i>		

Table 6. Wildlife Species Observed at Railhead Scrub Preserve

Mammals	Scientific Name	Designation
bobcat	<i>Lynx rufus</i>	
Eastern cottontail	<i>Sylvilagus floridanus</i>	
Eastern gray squirrel	<i>Sciurus carolinensis</i>	
Eastern mole	<i>Scalopus aquaticus</i>	
Florida black bear	<i>Ursus americanus floridanus</i>	
gray fox	<i>Urocyon cinereoargenteus</i>	
hispid cotton rat	<i>Sigmodon hispidus</i>	
marsh rabbit	<i>Sylvilagus palustris</i>	
nine-banded armadillo	<i>Dasypus novemcinctus</i>	
raccoon	<i>Procyon lotor</i>	
Virginia opossum	<i>Didelphis virginiana</i>	
white-tailed deer	<i>Odocoileus virginianus</i>	
Reptiles		
black racer	<i>Coluber constrictor</i>	
brown anole	<i>Anolis sagrei</i>	*non-native
common five-lined skink	<i>Plestiodon fasciatus</i>	
corn snake	<i>Pantherophis guttatus</i>	
Eastern coachwhip	<i>Masticophis flagellum</i>	
Eastern diamondback rattlesnake	<i>Crotalus adamanteus</i>	
Eastern ratsnake	<i>Pantherophis alleghaniensis</i>	
Florida box turtle	<i>Terrapene carolina</i>	
Florida gopher tortoise	<i>Gopherus polyphemus</i>	*State-threatened
Florida red-bellied cooter	<i>Pseudemys nelsoni</i>	
Florida softshell turtle	<i>Apalone ferox</i>	
six-lined racerunner	<i>Aspidoscelis sexlineatus</i>	
Amphibians		
cane toad	<i>Rhinella marina</i>	*non-native
Cuban treefrog	<i>Osteopilus septentrionalis</i>	*non-native
greenhouse treefrog	<i>Eleutherodactylus planirostris</i>	*non-native
oak toad	<i>Anaxyrus quercicus</i>	
pinewoods treefrog	<i>Hyla femoralis</i>	
Southern toad	<i>Anaxyrus terrestris</i>	
squirrel treefrog	<i>Hyla squirella</i>	

Table 7. Imperiled Plant Species at Railhead Scrub Preserve

Scientific Name	Common Names	IRC	State	FNAI
<i>Asclepias curtissii</i>	Curtiss' milkweed		E	S3
<i>Chamaesyce cumulicola</i>	Sand-dune spurge; Coastal dune sandmat		E	S2
<i>Encyclia tampensis</i>	Florida butterfly orchid		C	
<i>Lechea cernua</i>	Nodding pinweed		T	S3
<i>Lilium catesbaei</i>	Cateby's lily		T	
<i>Lipocarpa maculata</i>	American halfchaff sedge	SF1		
<i>Ophioglossum nudicaule</i>	Slender adder's tongue	SF1		
<i>Orthochilus ecristatus</i>	Giant orchid, non-crested Eulophia		T	S2
<i>Scleria ciliata</i> var. <i>curtissii</i>	Curtiss' nutrush	SF1		
<i>Stylisma abdita</i>	Showy dawnflower	SF1	E	S2S3
<i>Swietenia mahagoni</i>	West Indian mahogany		T	S3
<i>Tillandsia balbisiana</i>	Reflexed wild-pine, Northern needleleaf		T	
<i>Tillandsia fasciculata</i> var. <i>densispica</i>	Stiff-leaved wild-pine, Cardinal airplant		E	
<i>Tillandsia flexuosa</i>	Banded wild-pine, Twisted airplant		T	S3
<i>Tillandsia utriculata</i>	Giant wild-pine, Giant airplant		E	

E: Endangered, **T:** Threatened, **C:** Commercially Exploited, **SF1:** Critically Imperiled, **S2:** Critically Imperiled, **S3:** Imperiled

Table 8. Exotic Plant Species at Railhead Scrub Preserve

Scientific Name	Common Names	Category	Scientific Name	Common Names	Category
<i>Abrus precatorius</i>	rosary-pea, crab-eyes	I	<i>Momordica charantia</i>	balsam apple	II
<i>Acacia auriculiformis</i>	earleaf acacia	I	<i>Nephrolepis multiflora</i>	Asian sword fern	I
<i>Albizia lebbek</i>	woman's tongue	I	<i>Panicum maximum</i>	Guineagrass	II
<i>Ardisia elliptica</i>	shoebuttan ardesia	I	<i>Panicum repens</i>	torpedo grass	I
<i>Bauhinia variegata</i>	mountain ebony, orchidtree	I	<i>Psidium cattleianum</i>	strawberry guava	I
<i>Bischofia javanica</i>	Bishopwood	I	<i>Pteris vittata</i>	China brake	II
<i>Casuarina equisetifolia</i>	Australian pine	I	<i>Rhodomyrtus tomentosa</i>	downy myrtle, rose-myrtle	I
<i>Cupaniopsis anacardioides</i>	Carrotwood	I	<i>Rhynchelytrum repens</i>	rose natalgrass	I
<i>Dioscorea alata</i>	white yam	I	<i>Ricinus communis</i>	Castor-bean	II
<i>Dioscorea bulbifera</i>	air potato	I	<i>Sansevieria hyacinthoides</i>	bowstring-hemp, mother-in-laws tongue	II
<i>Ficus microcarpa</i>	laurel fig, Indian laurel	I	<i>Schinus terebinthifolius</i>	Brazilian pepper	I
<i>Hymenachne amplexicaulis</i>	west Indian marsh grass	I	<i>Schefflera actinophylla</i>	Australian umbrellatree	I
<i>Lantana camara</i>	Shrubverbena	I	<i>Solanum viarum</i>	tropical soda-apple	I
<i>Leucaena leucocephala</i>	white leadtree	II	<i>Urena lobata</i>	Caesarweed	I
<i>Lygodium microphyllum</i>	old world climbing fern	I	<i>Wedelia trilobata</i>	creeping oxeeye	II
<i>Melaleuca quinquenervia</i>	Melaleuca	I			

Table 9. Railhead Scrub Preserve Plant Inventory

Railhead Scrub Preserve Plant List 2020

Railhead Scrub Preserve

by Maureen S. Bonness, with assistance from Jean McCollom and Michael J. Barry

November 28, 2020

2006	2009	2020	Scientific Name (prior name)	Common Names	Native	Not Native	State	FNAI	FLEPPC
x	x	x	<i>Abrus precatorius</i>	Rosary-pea, Crab-eyes		√			I
x	x	x	<i>Acacia auriculiformis</i>	Earleaf acacia		√			I
		x	<i>Acalypha arvensis</i>	Field copperleaf		√			
x	x	x	<i>Acer rubrum</i>	Red maple	N				
		x	<i>Agalinis purpurea</i>	Purple false foxglove	N				
x			<i>Agave angustifolia</i>	Century plant		√			
		x	<i>Ageratum houstonianum</i>	Bluemink		√			
	x	x	<i>Albizia lebbbeck</i>	Woman's tongue, Rattlepod		√			I
	x	x	<i>Aletris lutea</i>	Yellow colicroot	N				
		x	<i>Allamanda cathartica</i>	Golden trumpet		√			
	x	x	<i>Amaranthus hybridus</i>	Common pigweed, Slim amaranth		√			
x			<i>Amaranthus spinosus</i>	Spiny amaranth		√			
x	x	x	<i>Ambrosia artemisiifolia</i>	Common ragweed	N				
x	x	x	<i>Amphicarpum muhlenbergianum</i>	Blue-maidencane	N				
x	x	x	<i>Andropogon brachystachyus</i>	Shortspike bluestem	N				
x	x		<i>Andropogon floridanus</i>	Florida bluestem	N				
x	x	x	<i>Andropogon glomeratus</i> var. <i>glaucopsis</i>	Purple bluestem	N				
x	x	x	<i>Andropogon glomeratus</i> var. <i>pumilus</i>	Common bushy bluestem	N				
	x	x	<i>Andropogon gyrans</i>	Elliott's bluestem	N				
x	x	x	<i>Andropogon virginicus</i>	Broomsedge bluestem	N				
x	x	x	<i>Andropogon virginicus</i> var. <i>glaucus</i>	Chalky bluestem	N				
x			<i>Anemia adiantifolia</i>	Pine fern, Maidenhair pineland fern	N				
	x	x	<i>Annona glabra</i>	Pond-apple	N				
	x		<i>Ardisia elliptica</i>	Shoe-button ardisia		√			I
x	x	x	<i>Aristida gyrans</i>	Corkscrew threeawn	N				
x	x		<i>Aristida palustris</i>	Longleaf threeawn	N				
	x		<i>Aristida patula</i>	Tall threeawn	N				
	x	x	<i>Aristida purpurascens</i>	Arrowfeather threeawn	N				
x	x	x	<i>Aristida spiciformis</i>	Bottlebrush threeawn	N				
x	x	x	<i>Aristida stricta</i> (=A. <i>beyrichiana</i>)	Southern wiregrass	N				
	x	x	<i>Asclepias curassavica</i>	Scarlet milkweed, Bloodflower		√			
x		x	<i>Asclepias curtissii</i>	Curtiss' milkweed	N		E		
x		x	<i>Asclepias pedicellata</i>	Savannah milkweed	N				
x	x	x	<i>Asemeia violacea</i> (=Polygala <i>grandiflora</i> , P. <i>violacea</i>)	Candyweed, Showy milkwort	N				
x	x	x	<i>Asimina reticulata</i>	Common pawpaw, Netted pawpaw	N				
x	x	x	<i>Axonopus fissifolius</i>	Common carpetgrass	N				
x	x	x	<i>Axonopus furcatus</i>	Big carpetgrass	N				
x		x	<i>Azolla filiculoides</i> (=A. <i>caroliniana</i>)	Waterfern	N				
	x		<i>Baccharis glomeruliflora</i>	Saltbush	N				
x	x	x	<i>Baccharis halimifolia</i>	Saltbush, Groundsel tree	N				
x	x	x	<i>Bacopa monnieri</i>	Water hyssop, Herb-of-grace	N				
x	x	x	<i>Balduina angustifolia</i>	Yellow-buttons, Coastalplain honeycombhead	N				
x		x	<i>Bauhinia variegata</i>	Orchid tree		√			I

Railhead Scrub Preserve Plant List 2020

2006	2009	2020	Scientific Name (prior name)	Common Names	Native	Not Native	State	FNAI	FLEPPC
x	x	x	<i>Bejaria racemosa</i>	Tarflower	N				
x	x	x	<i>Bidens alba</i>	Spanish-needles	N				
x	x	x	<i>Bigelovia nudata</i> subsp. <i>australis</i>	Pineland rayless goldenrod	N				
		x	<i>Bischofia javanica</i>	Javanese bishopwood		√			I
x	x	x	<i>Boehmeria cylindrica</i>	False nettle, Bog hemp	N				
		x	<i>Bougainvillea</i> sp.	Bougainvillea		√			
x	x	x	<i>Buchnera americana</i>	American bluehearts	N				
x	x	x	<i>Bulbostylis ciliatifolia</i>	Densetuft hairsedge	N				
		x	<i>Bulbostylis stenophylla</i>	Sandyfield hairsedge	N				
x			<i>Bulbostylis warei</i>	Ware's hairsedge	N				
		x	<i>Bursera simaruba</i>	Gumbo limbo	N				
	x	x	<i>Callicarpa americana</i>	American beautyberry	N				
		x	<i>Callisia ornata</i>	Florida scrub roseling	N				
	x		<i>Campyloneurum phyllitidis</i>	Long strap fern	N				
		x	<i>Cantinoa americana</i> (= <i>Hyptis spicigera</i>)	Marubio		√			
		x	<i>Caperonia castaneifolia</i>	Chestnutleaf falsecroton	N				
		x	<i>Carex longii</i>	Long's sedge	N				
x			<i>Carex vexans</i>	Florida hammock sedge	N				
x	x	x	<i>Carphephorus corymbosus</i>	Florida paintbrush, Coastalplain chaffhead	N				
x	x	x	<i>Carphephorus odoratissimus</i> var. <i>subtropicanus</i>	Pineland purple, False vanillaleaf	N				
x	x	x	<i>Cassipouira filiformis</i>	Lovevine, Devil's gut	N				
	x	x	<i>Casuarina equisetifolia</i>	Australian-pine, Horsetail casuarina		√			I
x			<i>Catharanthus roseus</i>	Madagascar periwinkle		√			
		x	<i>Cenchrus polystachios</i> (= <i>Pennisetum polystachion</i>)	West Indian pennisetum, Missiongrass		√			II
x	x	x	<i>Cenchrus spinifex</i> (= <i>C. incertus</i>)	Coastal sandbur	N				
	x	x	<i>Centella asiatica</i>	Coinwort, Spadeleaf	N				
x	x		<i>Centrosema virginianum</i>	Spurred butterfly-pea	N				
		x	<i>Cephalanthus occidentalis</i>	Buttonbush	N				
x	x	x	<i>Ceratiola ericoides</i>	Florida rosemary, Sand heath	N				
x	x	x	<i>Chamaecrista fasciculata</i>	Partridge pea	N				
		x	<i>Chamaecrista nictitans</i> var. <i>aspera</i>	Hairy sensitive-pea	N				
	x		<i>Chaptalia tomentosa</i>	Woolly sunbonnets, Pineland daisy	N				
		x	<i>Chiococca alba</i> (= <i>C. parvifolia</i>)	Pineland snowberry	N				
		x	<i>Chromolaena odorata</i>	Jack-in-the-bush	N				
		x	<i>Chrysobalanus icaco</i>	Coco plum	N				
	x		<i>Chrysopogon pauciflorus</i>	Florida false beardgrass	N				
x	x	x	<i>Chrysopsis scabrella</i>	Coastalplain goldenaster	N				
x	x		<i>Cirsium horridulum</i>	Purple thistle	N				
x		x	<i>Cirsium nuttallii</i>	Nuttall's thistle	N				
		x	<i>Cissus verticillata</i> (= <i>C. sicyoides</i>)	Possum grape	N				
x	x	x	<i>Cladium jamaicense</i>	Sawgrass	N				
x	x	x	<i>Cnidioscolus stimulosus</i>	Tread-softly, Finger-rot, 7-minute-itch	N				
	x		<i>Coleataenia rigidula</i> (= <i>Panicum rigidulum</i>)	Redtop panicum	N				
x	x	x	<i>Coleataenia tenera</i> (= <i>Panicum tenerum</i>)	Bluejoint panicum	N				
x	x	x	<i>Commelina diffusa</i>	Common dayflower		√			

Railhead Scrub Preserve Plant List 2020

2006	2009	2020	Scientific Name (prior name)	Common Names	Native	Not Native	State	FNAI	FLEPPC
x		x	<i>Commelina erecta</i>	Whitemouth dayflower	N				
x	x	x	<i>Coreopsis leavenworthii</i>	Leavenworth's tickseed	N				
x			<i>Crocyanthemum corymbosum</i> (= <i>Helianthemum corymbosum</i>)	Pinebarren frostweed	N				
x	x	x	<i>Crocyanthemum nashii</i> (= <i>Helianthemum nashii</i>)	Florida scrub frostweed	N				
x	x	x	<i>Crotalaria pallida</i> var. <i>obovata</i>	Smooth rattlebox		√			
x	x	x	<i>Crotalaria rotundifolia</i>	Rabbitbells	N				
		x	<i>Crotalaria spectabilis</i>	Showy rattlebox		√			
x		x	<i>Croton glandulosus</i> var. <i>septentrionalis</i> (=var. <i>glandulosus</i>)	Vente conmigo	N				
	x		<i>Cupaniopsis anacardioides</i>	Carrotwood		√			I
x		x	<i>Cuphea carthagenensis</i>	Colombian waxweed		√			
x			<i>Cyanthillium cinereum</i> (= <i>Vernonia cinerea</i>)	Little ironweed		√			
x	x	x	<i>Cynodon dactylon</i>	Bermuda grass		√			
x			<i>Cyperus compressus</i>	Poorland flatsedge	N				
	x	x	<i>Cyperus croceus</i>	Baldwin's flatsedge	N				
x			<i>Cyperus distans</i>	Piedmont flatsedge		√			
		x	<i>Cyperus esculentus</i>	Yellow nutsedge		√			
x	x	x	<i>Cyperus haspan</i>	Haspan flatsedge	N				
		x	<i>Cyperus hortensis</i> (= <i>Kyllinga pumila</i>)	Low spikesedge	N				
x	x	x	<i>Cyperus ligularis</i>	Swamp flatsedge	N				
x			<i>Cyperus neochinensis</i> (= <i>Lipocarpa aristulata</i>)	Awned halfchaff sedge		√			
x			<i>Cyperus neotropicalis</i> (= <i>Lipocarpa maculata</i>)	American halfchaff sedge	N				
x		x	<i>Cyperus odoratus</i>	Fragrant flatsedge	N				
x	x	x	<i>Cyperus ovatus</i> (= <i>C. retrorsus</i>)	Pinebarren flatsedge	N				
x	x	x	<i>Cyperus polystachyos</i>	Manyspike flatsedge, Texas sedge	N				
x		x	<i>Cyperus pumilus</i>	Low flatsedge		√			
x	x	x	<i>Cyperus surinamensis</i>	Tropical flatsedge	N				
x	x	x	<i>Dactyloctenium aegyptium</i>	Crow's-foot grass		√			II
		x	<i>Dalbergia ecastaphyllum</i>	Coinvine	N				
x			<i>Delonix regia</i>	Royal poinciana		√			
	x		<i>Dendrophylax porrectus</i> (= <i>Harrisella porrecta</i>)	Needleroot airplant orchid	N		T		
	x		<i>Descurainia pinnata</i>	Western tansymustard	N				
x	x	x	<i>Desmodium incanum</i>	Beggar's-ticks		√			
x	x		<i>Desmodium tortuosum</i>	Dixie ticktrefoil		√			
x			<i>Desmodium triflorum</i>	Threeflower ticktrefoil		√			
x	x	x	<i>Dichantherium aciculare</i>	Needleleaf witchgrass	N				
x	x	x	<i>Dichantherium ensifolium</i>	Cypress witchgrass	N				
x		x	<i>Dichantherium erectifolium</i>	Erect witchgrass	N				
	x	x	<i>Dichantherium leucothrix</i>	Rough witchgrass	N				
	x		<i>Dichantherium ovale</i>	Eggleaf witchgrass	N				
x	x	x	<i>Dichantherium portoricense</i>	Hemlock witchgrass	N				
x	x	x	<i>Dichantherium strigosum</i> var. <i>glabrescens</i>	Roughhair witchgrass	N				
	x	x	<i>Digitaria bicornis</i>	Asia crabgrass		√			

Railhead Scrub Preserve Plant List 2020

2006	2009	2020	Scientific Name (prior name)	Common Names	Native	Not Native	State	FNAI	FLEPPC
x			<i>Digitaria ciliaris</i>	Southern crabgrass	N				
x		x	<i>Digitaria filiformis</i> var. <i>filiformis</i>	Slender crabgrass	N				
x	x	x	<i>Digitaria longiflora</i>	Indian crabgrass		√			
x	x	x	<i>Diodia virginiana</i>	Buttonweed, Virginia buttonweed	N				
x			<i>Dioscorea alata</i>	White yam		√			I
		x	<i>Dioscorea bulbifera</i>	Air potato		√			I
	x		<i>Diplachne fusca</i> subsp. <i>fascicularis</i> (= <i>Leptochloa fascicularis</i>)	Bearded spangletop	N				
x			<i>Dracaena hyacinthoides</i> (= <i>Sansevieria hyacinthoides</i>)	Mother-in-law's tonge		√			II
x	x	x	<i>Drosera brevifolia</i>	Dwarf sundew	N				
		x	<i>Drymaria cordata</i>	Drymary, West Indian chickweed		√			
	x		<i>Dyschoriste angusta</i>	Pineland twinflower, Pineland snakeherb	N				
		x	<i>Echinochloa walteri</i>	Coast cockspur	N				
x		x	<i>Eclipta prostrata</i>	False daisy	N				
x	x	x	<i>Edrastrima uniflora</i> (= <i>Hedyotis uniflora</i> , <i>Oldenlandia uniflora</i>)	Clustered mille graine	N				
x		x	<i>Eleocharis baldwinii</i>	Baldwin's spikerush, Roadgrass, Hairsedge	N				
	x		<i>Eleocharis geniculata</i>	Canada spikerush	N				
		x	<i>Eleocharis interstincta</i>	Knotted spikerush	N				
		x	<i>Eleocharis nigrescens</i>	Black spikerush		√			
	x		<i>Elephantopus elatus</i>	Tall elephantsfoot	N				
	x		<i>Elionurus tripsacoides</i>	Pan-American balsamscale	N				
	x	x	<i>Emilia fosbergii</i>	Florida tasselflower		√			
x	x	x	<i>Emilia sonchifolia</i>	Lilac tasselflower		√			
x	x	x	<i>Encyclia tampensis</i>	Florida butterfly orchid	N				
x	x	x	<i>Eragrostis atrovirens</i>	Thalia lovegrass		√			
		x	<i>Eragrostis bahiensis</i>	Bahia lovegrass		√			
	x	x	<i>Eragrostis ciliaris</i>	Gophertail lovegrass		√			
x	x	x	<i>Eragrostis elliottii</i>	Elliott's lovegrass	N				
	x	x	<i>Eragrostis gangetica</i>	Slimflower lovegrass		√			
x	x	x	<i>Eragrostis refracta</i> (= <i>E. virginica</i>)	Coastal lovegrass	N				
x			<i>Eragrostis secundiflora</i> subsp. <i>oxylepis</i>	Red lovegrass	N				
		x	<i>Eragrostis spectabilis</i>	Purple lovegrass	N				
x	x	x	<i>Erechtites hieracifolius</i>	Fireweed, American burnweed	N				
x	x		<i>Erigeron quercifolius</i>	Southern-fleabane, Oakleaf fleabane	N				
		x	<i>Erigeron vernus</i>	Early whitetop fleabane	N				
x	x	x	<i>Eriocaulon decangulare</i>	Tenangle pipewort	N				
x	x	x	<i>Eryngium aromaticum</i>	Fragrant eryngium, Fragrant Eryngo	N				
x	x	x	<i>Eryngium baldwinii</i>	Baldwin's eryngo	N				
x	x	x	<i>Eulophia alta</i>	Wild-coco	N				
x	x	x	<i>Eupatorium capillifolium</i>	Dogfennel	N				
x	x	x	<i>Eupatorium leptophyllum</i>	Falsefennel	N				
x	x	x	<i>Eupatorium mikanioides</i>	Semaphore thoroughwort	N				
x		x	<i>Eupatorium mohrii</i>	Mohr's thoroughwort	N				

Railhead Scrub Preserve Plant List 2020

2006	2009	2020	Scientific Name (prior name)	Common Names	Native	Not Native	State	FNAI	FLEPPC
		x	<i>Euphorbia blodgettii</i> (=Chamaesyce blodgettii)	Limestone sandmap	N				
x	x	x	<i>Euphorbia cumulicola</i> (=Chamaesyce cumulicola)	Sand-dune spurge, Coastal dune sandmat	N		E	S2	
x		x	<i>Euphorbia cyathophora</i> (=Poinsettia cyathophora)	Painted leaf, Fire-on-the-mountain	N				
x			<i>Euphorbia graminea</i>	Grassleaf spurge		√			
x	x	x	<i>Euphorbia heterophylla</i> (=Poinsettia heterophylla)	Fiddler's spurge, Mexican fireplant	N				
	x	x	<i>Euphorbia hirta</i> (=Chamaesyce hirta)	Hairy spurge, Pillpod sandmat	N				
x	x		<i>Euphorbia hypericifolia</i> (=Chamaesyce hypericifolia)	Eyebane, Graceful sandmat	N				
x	x	x	<i>Euphorbia hyssopifolia</i> (=Chamaesyce hyssopifolia)	Eyebane, Hyssopleaf sandmat	N				
x	x	x	<i>Euphorbia polyphylla</i>	Lesser Florida spurge	N				
x	x	x	<i>Euploca polyphylla</i> (=Heliotropium polyphyllum)	Pineland heliotrope	N				
x	x	x	<i>Eustachys glauca</i>	Prairie fingergrass	N				
x	x	x	<i>Eustachys petraea</i>	Pinewoods fingergrass	N				
x	x	x	<i>Euthamia caroliniana</i>	Slender flattop goldenrod	N				
	x		<i>Evolvulus sericeus</i>	Silver dwarf morningglory	N				
	x	x	<i>Ficus aurea</i>	Strangler fig, Golden fig	N				
x	x	x	<i>Ficus citrifolia</i>	Short-leaf fig, Wild banyan tree	N				
x	x	x	<i>Ficus microcarpa</i>	Laurel fig, Indian laurel		√			I
x	x	x	<i>Fimbristylis autumnalis</i>	Slender fimbry	N				
	x	x	<i>Fimbristylis caroliniana</i>	Carolina fimbry	N				
x	x	x	<i>Fimbristylis cymosa</i>	Hurricanegrass		√			
x		x	<i>Fimbristylis puberula</i>	Hairy fimbry	N				
	x	x	<i>Fuirena breviseta</i>	Saltmarsh umbrellasedge	N				
x	x	x	<i>Fuirena scirpoidea</i>	Southern umbrellasedge	N				
x	x	x	<i>Funastrum clausum</i> (=Sarcostemma clausum)	Whitevine, White twinevine	N				
	x	x	<i>Galactia elliotii</i>	Elliott's milkpea	N				
x	x	x	<i>Galactia regularis</i>	Downy milkpea	N				
x			<i>Galactia volubilis</i>	Eastern milkpea	N				
	x		<i>Gamochaeta antillana</i> (=Gnaphalium falcatum)	Cudweed, Narrowleaf purple everlasting	N				
x	x	x	<i>Geobalanus oblongifolius</i> (=Licania michauxii)	Gopher-apple	N				
	x	x	<i>Gratiola ramosa</i>	Branched hedgehyssop	N				
		x	<i>Grevillea robusta</i>	Silk-oak		√			
		x	<i>Gymnopogon chapmanianus</i>	Chapman's skeletongrass	N				
		x	<i>Hamelia patens</i>	Firebush	N				
x			<i>Helenium amarum</i>	Spanish daisy, Bitterweed	N				
		x	<i>Heliotropium angiospermum</i>	Scorpionstail	N				
	x	x	<i>Heteropogon contortus</i>	Tanglehead	N				
x	x	x	<i>Heterotheca subaxillaris</i>	Camphorweed	N				
x	x	x	<i>Hexasepalum teres</i> (=Diodia teres)	Poor joe, Rough buttonweed	N				
x	x		<i>Hieracium megacephalon</i>	Coastal plain hawkweed	N				

Railhead Scrub Preserve Plant List 2020

2006	2009	2020	Scientific Name (prior name)	Common Names	Native	Not Native	State	FNAI	FLEPPC
	x	x	<i>Houstonia procumbens</i> (=Hedyotis procumbens)	Innocence, Roundleaf bluet	N				
x		x	<i>Hydrocotyle umbellata</i>	Manyflower marshpennywort	N				
	x		<i>Hydrocotyle verticillata</i>	Whorled marshpennywort	N				
		x	<i>Hymenachne amplexicaulis</i>	West Indian marshgrass, Trompetilla		√			I
	x	x	<i>Hypericum brachyphyllum</i>	Coastalplain St. John's-wort	N				
x	x	x	<i>Hypericum cistifolium</i>	Roundpod St. John's-wort	N				
		x	<i>Hypericum fasciculatum</i>	Peelbark St. John's-wort	N				
x		x	<i>Hypericum gentianoides</i>	Pineweeds, Orangegrass	N				
x	x	x	<i>Hypericum hypericoides</i>	St. Andrew's-cross	N				
x		x	<i>Hypericum mutilum</i>	Dwarf St. John's-wort	N				
x	x	x	<i>Hypericum tenuifolium</i> (=Hypericum reductum)	Atlantic St. John's-wort	N				
	x	x	<i>Hypericum tetrapetalum</i>	Fourpetal St. John's-wort	N				
x	x	x	<i>Hypoxis juncea</i>	Fringed Yellow stargrass	N				
	x	x	<i>Hyptis alata</i>	Musky mint, Clustered bushmint	N				
x	x	x	<i>Ilex cassine</i>	Dahoon holly, Dahoon	N				
x	x	x	<i>Ilex glabra</i>	Gallberry, Inkberry	N				
x	x	x	<i>Indigofera hirsuta</i>	Hairy indigo		√			
		x	<i>Ipomoea hederifolia</i>	Scarletcreeper	N				
		x	<i>Ipomoea quamoclit</i>	Cypressvine		√			
x	x	x	<i>Ipomoea sagittata</i>	Everglades morningglory	N				
		x	<i>Ipomoea triloba</i>	Littlebell		√			
x		x	<i>Iresine diffusa</i>	Bloodleaf, Juba's bush	N				
	x		<i>Iva microcephala</i>	Piedmont marshelder	N				
	x		<i>Juncus effusus</i> subsp. <i>solutus</i>	Soft rush	N				
x	x		<i>Juncus marginatus</i>	Shore rush, Grassleaf rush	N				
x	x	x	<i>Juncus megacephalus</i>	Bighead rush	N				
		x	<i>Juncus roemerianus</i>	Needle rush, Black rush	N				
		x	<i>Juncus scirpoides</i>	Needlepod rush	N				
	x		<i>Juniperus virginiana</i>	Red cedar	?				
x	x	x	<i>Lachnanthes carolina</i>	Bloodroot, Carolina redroot	N				
x	x	x	<i>Lachnocaulon anceps</i>	Whitehead bogbutton	N				
		x	<i>Landoltia punctata</i>	Dotted duckweed		√			
x	x		<i>Lantana strigocamara</i> (=L. camara)	Shrubverbena		√			I
x	x	x	<i>Lechea cernua</i>	Nodding pinweed	N		T	S3	
x	x	x	<i>Lechea torreyi</i>	Piedmont pinweed	N				
		x	<i>Lemna obscura</i>	Duckweed	N				
x			<i>Lemna valdiviana</i>	Duckweed	N				
x	x		<i>Lepidium virginicum</i>	Virginia pepperweed	N				
	x		<i>Leucaena leucocephala</i>	White leadtree		√			II
x	x	x	<i>Liatris chapmanii</i>	Chapman's gayfeather	N				
x	x	x	<i>Liatris tenuifolia</i>	Shortleaf gayfeather	N				
x			<i>Lilium catesbaei</i>	Catesby's Lily	N		T		
x			<i>Linaria canadensis</i>	Canadian toadflax	N				
		x	<i>Lobelia glandulosa</i>	Glade lobelia	N				
x		x	<i>Lobelia paludosa</i>	White lobelia	N				
x	x	x	<i>Ludwigia curtissii</i>	Curtiss's primrosewillow	N				
x	x	x	<i>Ludwigia maritima</i>	Seaside primrosewillow	N				

Railhead Scrub Preserve Plant List 2020

2006	2009	2020	Scientific Name (prior name)	Common Names	Native	Not Native	State	FNAI	FLEPPC
	x	x	<i>Ludwigia microcarpa</i>	Smallfruit primrosewillow	N				
x	x	x	<i>Ludwigia octovalvis</i>	Mexican primrosewillow	N				
	x	x	<i>Ludwigia peruviana</i>	Peruvian primrosewillow		√			I
		x	<i>Ludwigia repens</i>	Creeping primrosewillow	N				
x	x	x	<i>Lygodesmia aphylla</i>	Roserush	N				
	x	x	<i>Lygodium microphyllum</i>	Small-leaf climbing fern		√			I
x	x	x	<i>Lyonia fruticosa</i>	Coastalplain staggerbush	N				
		x	<i>Lysimachia arvensis</i> (=Anagallis arvensis)	Scarlet pimpernel		√			
x	x	x	<i>Lythrum alatum</i> var. <i>lanceolatum</i>	Winged loosestrife	N				
x	x	x	<i>Macroptilium lathyroides</i>	Wild bushbean		√			II
	x	x	<i>Mecardonia acuminata</i> subsp. <i>peninsularis</i>	Axilflower	N				
	x		<i>Medicago lupulina</i>	Black medic		√			
x	x	x	<i>Melaleuca quinquenervia</i>	Punktree		√			I
x	x	x	<i>Melinis repens</i> (=Rhynchelytrum repens)	Rose Natalgrass		√			I
x	x	x	<i>Melochia spicata</i>	Bretonica peluda	N				
x	x	x	<i>Melothria pendula</i>	Creeping-cucumber	N				
	x		<i>Mesosphaerum pectinatum</i> (=Hyptis pectinata)	Comb bushmint		√			
x			<i>Microsorium scolopendria</i> (=Phymatosorus scolopendria)	Serpent fern, Wart fern		√			
x	x	x	<i>Mikania scandens</i>	Climbing hempweed, Climbing hempvine	N				
	x	x	<i>Mitreola petiolata</i>	Miterwort, Lax hornpod	N				
	x		<i>Mollugo verticillata</i>	Indian-chickweed, Green carpetweed		√			
x	x	x	<i>Momordica charantia</i>	Balsampear		√			II
x	x	x	<i>Morella cerifera</i> (=Myrica cerifera)	Wax myrtle, Southern bayberry	N				
x	x	x	<i>Muhlenbergia capillaris</i>	Muhlygrass, Hairawnmuhly	N				
		x	<i>Murdannia nudiflora</i>	Nakedstem dewflower		√			
x	x	x	<i>Myrsine cubana</i> (=Rapanea punctata)	Myrsine, Colicwood	N				
		x	<i>Nekemias arborea</i> (=Ampelopsis arborea)	Peppervine	N				
	x	x	<i>Nephrolepis brownii</i> (=N. multiflora)	Asian sword fern		√			I
x	x	x	<i>Nephrolepis exaltata</i>	Wild Boston fern	N				
x	x	x	<i>Nymphaea odorata</i>	American white waterlily	N				
	x		<i>Oeceoclades maculata</i>	African ground orchid, Monk orchid		√			
		x	<i>Oenothera simulans</i> (=Gaura angustifolia)	Southern beeblossom	N				
x		x	<i>Oldenlandia corymbosa</i> (=Hedyotis corymbosa)	Flattop mille grains		√			
x			<i>Ophioglossum nudicaule</i>	Slender adder's tongue	N				
x			<i>Opuntia cochenillifera</i>	Cochineal cactus		√			
x	x	x	<i>Opuntia humifusa</i>	Pricklypear	N				
		x	<i>Opuntia stricta</i>	Pricklypear	N		T		
		x	<i>Orthochilus ecristatus</i> (=Pteroglossaspis ecristata)	Giant orchid, Non-crested Eulophia	N		T	S2	

Railhead Scrub Preserve Plant List 2020

2006	2009	2020	Scientific Name (prior name)	Common Names	Native	Not Native	State	FNAI	FLEPPC
	x	x	<i>Osmunda regalis</i> var. <i>spectabilis</i>	Royal fern	N				
x	x	x	<i>Palafoxia feayi</i>	Feay's palafox	N				
x	x	x	<i>Panicum hemitomon</i>	Maidencane	N				
x	x	x	<i>Panicum repens</i>	Torpedo grass		√			I
	x		<i>Parietaria floridana</i>	Florida pellitory	N				
	x	x	<i>Parthenocissus quinquefolia</i>	Virginia-creeper, Woodbine	N				
	x		<i>Paspalum caespitosum</i>	Blue paspalum, Blue crowngrass	N				
x		x	<i>Paspalum conjugatum</i>	Sour paspalum, Hilogress	N				
		x	<i>Paspalum floridanum</i>	Florida paspalum	N				
x	x	x	<i>Paspalum monostachyum</i>	Gulfdune paspalum	N				
x	x	x	<i>Paspalum notatum</i>	Bahia grass		√			
x	x	x	<i>Paspalum setaceum</i>	Thin paspalum	N				
		x	<i>Paspalum urvillei</i>	Vaseygrass		√			
x	x		<i>Paspalum vaginatum</i>	Seashore paspalum	N				
x	x	x	<i>Passiflora suberosa</i>	Corkstem passionflower	N				
x		x	<i>Peltophorum pterocarpum</i>	Yellow poinciana		√			
		x	<i>Pentalinon luteum</i>	Wild allamanda, Hammock viperstail	N				
		x	<i>Pentodon pentandrus</i>	Hale's pentodon	N				
x	x	x	<i>Persea palustris</i>	Swamp bay	N				
		x	<i>Persicaria glabra</i> (= <i>Polygonum densiflorum</i>)	Denseflower knotweed	N				
		x	<i>Persicaria hydropiperoides</i> (= <i>Polygonum hydropiperoides</i>)	Mild waterpepper; Swamp smartweed	N				
x		x	<i>Persicaria punctata</i> (= <i>Polygonum punctatum</i>)	Dotted smartweed	N				
x	x	x	<i>Phlebodium aureum</i>	Golden polypody	N				
x	x	x	<i>Phyla nodiflora</i>	Frogfruit, Turkey tangle fogfruit, Capeweed	N				
	x	x	<i>Phyllanthus amarus</i>	Gale-of-wind, Carry-me-seed		√			
	x	x	<i>Phyllanthus carolinensis</i> subsp. <i>saxicola</i>	Rock Carolina leafflower	N				
		x	<i>Phyllanthus tenellus</i>	Mascarene Island leafflower		√			
	x		<i>Physalis angulata</i>	Cutleaf groundcherry	N				
		x	<i>Physalis cordata</i>	Heartleaf groundcherry	N				
x	x	x	<i>Physalis walteri</i>	Walter's groundcherry	N				
	x	x	<i>Phytolacca americana</i>	American pokeweed	N				
x	x	x	<i>Piloblephis rigida</i>	Wild pennyroyal	N				
x	x	x	<i>Pinus elliotii</i> var. <i>densa</i>	South Florida slash pine	N				
x	x	x	<i>Piriqueta cistoides</i> subsp. <i>caroliniana</i> (= <i>Piriqueta caroliniana</i>)	Pitted stripeseed	N				
x	x	x	<i>Pityopsis graminifolia</i>	Narrowleaf silkgrass	N				
	x		<i>Plantago virginica</i>	Southern plantain, Virginia plantain	N				
x	x	x	<i>Pleopeltis michauxiana</i> (= <i>Polypodium polypodioides</i>)	Resurrection fern	N				
x	x	x	<i>Pluchea baccharis</i> (= <i>Pluchea rosea</i>)	Rosy camphorweed	N				
	x	x	<i>Pluchea carolinensis</i>	Cure-for-all	N				
x		x	<i>Pluchea foetida</i>	Stinking camphorweed	N				
x	x	x	<i>Pluchea odorata</i>	Sweetscent	N				
x	x	x	<i>Polanisia tenuifolia</i>	Slenderleaf clammyweed	N				

Railhead Scrub Preserve Plant List 2020

2006	2009	2020	Scientific Name (prior name)	Common Names	Native	Not Native	State	FNAI	FLEPPC
x			<i>Polygala lutea</i>	Orange milkwort	N				
x	x	x	<i>Polygala nana</i>	Candyroot	N				
x		x	<i>Polygala rugelii</i>	Yellow milkwort	N				
x	x	x	<i>Polygala setacea</i>	Coastalplain milkwort	N				
x			<i>Polygonum delopyrum</i> (=P. ciliata)	Hairy jointweed	N				
x	x	x	<i>Polygonum polygamum</i> var. <i>brachystachyum</i> (=Polygonella <i>polygama</i> var. <i>brachystachya</i>)	Thinleaf October flower	N				
x	x	x	<i>Polypremum procumbens</i>	Rustweed, Juniperleaf	N				
		x	<i>Pontederia cordata</i>	Pickerelweed	N				
		x	<i>Portulaca pilosa</i>	Pink purselane, Kiss-me-quick	N				
		x	<i>Pouzolzia zeylanica</i>	Pouzolz's bush		√			
	x		<i>Psidium cattleianum</i>	Strawberry guava		√			I
x			<i>Pteridium aquilinum</i> var. <i>caudatum</i>	Tailed bracken fern	N				
x	x	x	<i>Pteridium aquilinum</i> var. <i>pseudocaudatum</i>	Tailed bracken fern	N				
	x	x	<i>Pteris vittata</i>	China brake		√			II
x	x	x	<i>Pterocaulon pycnostachyum</i>	Blackroot	N				
x		x	<i>Ptilimnium capillaceum</i>	Mock bishopsweed, Herbwilliam	N				
x			<i>Quercus chapmanii</i>	Chapman's oak	N				
x	x	x	<i>Quercus geminata</i>	Sand live oak	N				
x	x	x	<i>Quercus laurifolia</i>	Laurel oak, Diamond oak	N				
x	x	x	<i>Quercus minima</i>	Dwarf live oak	N				
x	x	x	<i>Quercus myrtifolia</i>	Myrtle oak	N				
x	x	x	<i>Quercus virginiana</i>	Virginia live oak	N				
	x	x	<i>Rhexia cubensis</i>	West Indian meadowbeauty	N				
x	x	x	<i>Rhexia mariana</i>	Pale meadowbeauty	N				
		x	<i>Rhexia nuttallii</i>	Nuttall's meadowbeauty	N				
x	x	x	<i>Rhodomyrtus tomentosa</i>	Downy rose myrtle		√			I
x	x	x	<i>Rhus copallinum</i>	Winged sumac	N				
		x	<i>Rhynchospora ciliaris</i>	Fringed beaksedge	N				
	x	x	<i>Rhynchospora colorata</i>	Starrush whitetop	N				
x	x	x	<i>Rhynchospora divergens</i>	Spreading beaksedge	N				
x	x	x	<i>Rhynchospora fascicularis</i>	Fascicled Beaksedge	N				
		x	<i>Rhynchospora fernaldii</i>	Fernald's beaksedge	N				
		x	<i>Rhynchospora filifolia</i>	Threadleaf beaksedge	N				
		x	<i>Rhynchospora globularis</i>	Globe beaksedge	N				
x	x	x	<i>Rhynchospora intermedia</i>	Pinebarren beaksedge	N				
	x		<i>Rhynchospora inundata</i>	Narrowfruit horned beaksedge	N				
x			<i>Rhynchospora latifolia</i>	Giant whitetop	N				
x	x	x	<i>Rhynchospora megalocarpa</i>	Sandyfield beaksedge	N				
x	x	x	<i>Rhynchospora microcarpa</i>	Southern beaksedge	N				
x	x	x	<i>Rhynchospora nitens</i>	Shortbeak beaksedge	N				
x	x	x	<i>Rhynchospora plumosa</i>	Plumed beaksedge	N				
x	x	x	<i>Rhynchospora tracyi</i>	Tracy's beaksedge	N				
x		x	<i>Richardia brasiliensis</i>	Tropical Mexican clover		√			
x	x	x	<i>Richardia grandiflora</i>	Largeflower Mexican clover		√			II
	x	x	<i>Richardia scabra</i>	Rough Mexican clover		√			
	x	x	<i>Ricinus communis</i>	Castor-bean		√			II

Railhead Scrub Preserve Plant List 2020

2006	2009	2020	Scientific Name (prior name)	Common Names	Native	Not Native	State	FNAI	FLEPPC
x			<i>Polygala lutea</i>	Orange milkwort	N				
x	x	x	<i>Polygala nana</i>	Candyroot	N				
x		x	<i>Polygala rugelii</i>	Yellow milkwort	N				
x	x	x	<i>Polygala setacea</i>	Coastalplain milkwort	N				
x			<i>Polygonum delopyrum (=P. ciliata)</i>	Hairy jointweed	N				
x	x	x	<i>Polygonum polygamum</i> var. <i>brachystachyum (=Polygonella</i> <i>polygama</i> var. <i>brachystachya)</i>	Thinleaf October flower	N				
x	x	x	<i>Polypremum procumbens</i>	Rustweed, Juniperleaf	N				
		x	<i>Pontederia cordata</i>	Pickerelweed	N				
		x	<i>Portulaca pilosa</i>	Pink purselane, Kiss-me-quick	N				
		x	<i>Pouzolzia zeylanica</i>	Pouzolz's bush		√			
	x		<i>Psidium cattleianum</i>	Strawberry guava		√			I
x			<i>Pteridium aquilinum</i> var. <i>caudatum</i>	Tailed bracken fern	N				
x	x	x	<i>Pteridium aquilinum</i> var. <i>pseudocaudatum</i>	Tailed bracken fern	N				
	x	x	<i>Pteris vittata</i>	China brake		√			II
x	x	x	<i>Pterocaulon pycnostachyum</i>	Blackroot	N				
x		x	<i>Ptilimnium capillaceum</i>	Mock bishopsweed, Herbwilliam	N				
x			<i>Quercus chapmanii</i>	Chapman's oak	N				
x	x	x	<i>Quercus geminata</i>	Sand live oak	N				
x	x	x	<i>Quercus laurifolia</i>	Laurel oak, Diamond oak	N				
x	x	x	<i>Quercus minima</i>	Dwarf live oak	N				
x	x	x	<i>Quercus myrtifolia</i>	Myrtle oak	N				
x	x	x	<i>Quercus virginiana</i>	Virginia live oak	N				
	x	x	<i>Rhexia cubensis</i>	West Indian meadowbeauty	N				
x	x	x	<i>Rhexia mariana</i>	Pale meadowbeauty	N				
		x	<i>Rhexia nuttallii</i>	Nuttall's meadowbeauty	N				
x	x	x	<i>Rhodomyrtus tomentosa</i>	Downy rose myrtle		√			I
x	x	x	<i>Rhus copallinum</i>	Winged sumac	N				
		x	<i>Rhynchospora ciliaris</i>	Fringed beaksedge	N				
	x	x	<i>Rhynchospora colorata</i>	Starrush whitetop	N				
x	x	x	<i>Rhynchospora divergens</i>	Spreading beaksedge	N				
x	x	x	<i>Rhynchospora fascicularis</i>	Fascicled Beaksedge	N				
		x	<i>Rhynchospora fernaldii</i>	Fernald's beaksedge	N				
		x	<i>Rhynchospora filifolia</i>	Threadleaf beaksedge	N				
		x	<i>Rhynchospora globularis</i>	Globe beaksedge	N				
x	x	x	<i>Rhynchospora intermedia</i>	Pinebarren beaksedge	N				
	x		<i>Rhynchospora inundata</i>	Narrowfruit horned beaksedge	N				
x			<i>Rhynchospora latifolia</i>	Giant whitetop	N				
x	x	x	<i>Rhynchospora megalocarpa</i>	Sandyfield beaksedge	N				
x	x	x	<i>Rhynchospora microcarpa</i>	Southern beaksedge	N				
x	x	x	<i>Rhynchospora nitens</i>	Shortbeak beaksedge	N				
x	x	x	<i>Rhynchospora plumosa</i>	Plumed beaksedge	N				
x	x	x	<i>Rhynchospora tracyi</i>	Tracy's beaksedge	N				
x		x	<i>Richardia brasiliensis</i>	Tropical Mexican clover		√			
x	x	x	<i>Richardia grandiflora</i>	Largeflower Mexican clover		√			II
	x	x	<i>Richardia scabra</i>	Rough Mexican clover		√			
	x	x	<i>Ricinus communis</i>	Castor-bean		√			II

Railhead Scrub Preserve Plant List 2020

2006	2009	2020	Scientific Name (prior name)	Common Names	Native	Not Native	State	FNAI	FLEPPC
x	x	x	<i>Sphagneticola trilobata</i> (=Wedelia trilobata)	Creeping wedelia, Creeping oxeye		√			II
x	x	x	<i>Sporobolus jacquemontii</i> (=S. indicus var. pyramidalis)	Smutgrass, West Indian dropseed		√			I
x		x	<i>Sporobolus junceus</i>	Pineywoods dropseed	N				
x	x	x	<i>Steinchisma hians</i> (=Panicum hians)	Gaping panicum	N				
	x		<i>Stenandrium dulce</i>	Pinklet	N				
	x	x	<i>Stenotaphrum secundatum</i>	St. Augustine grass		√			
		x	<i>Stillingia aquatica</i>	Corkwood; water toothleaf	N				
x	x	x	<i>Stillingia sylvatica</i>	Queensdelight	N				
x	x	x	<i>Stipulicida setacea</i>	Pineland scalypink	N				
x	x	x	<i>Stylisma abdita</i>	Showy dawnflower	N		E	S3	
		x	<i>Swietenia mahagoni</i>	West Indian mahogany	N		T	S3	
		x	<i>Syagrus romanzoffiana</i>	Queen palm		√			II
x			<i>Symphotrichum subulatum</i> (=Aster subulatus)	Annual saltmarsh aster	N				
x	x	x	<i>Syngonanthus flavidulus</i>	Yellow hatpins	N				
		x	<i>Syngonium podophyllum</i>	American evergreen		√			I
		x	<i>Syzygium cumini</i>	Java plum		√			I
x	x	x	<i>Taxodium ascendens</i>	Pond cypress	N				
x	x	x	<i>Telmatoblechnum serrulatum</i> (=Blechnum serrulatum)	Swamp fern	N				
x			<i>Tephrosia rugelii</i>	Rugel's hoarypea	N				
		x	<i>Tephrosia</i> sp.	Hoarypea	N				
		x	<i>Thalia geniculata</i>	Alligatorflag; Fireflag	N				
		x	<i>Thelypteris dentata</i>	Downy maiden fern	N				
	x	x	<i>Thelypteris interrupta</i>	Interrupted maiden fern, Hottentot fern	N				
x	x	x	<i>Thelypteris kunthii</i>	Southern shield fern	N				
		x	<i>Tiedemannia filiformis</i> subsp. filiformis (=Oxypolis filiformis)	Water cowbane	N				
x	x	x	<i>Tillandsia balbisiana</i>	Reflexed wild-pine	N		T		
x	x	x	<i>Tillandsia fasciculata</i>	Stiff-leaved wild-pine, Cardinal airplant	N		E		
x	x	x	<i>Tillandsia flexuosa</i>	Banded wild-pine, Twisted airplant	N		T	S3	
x	x	x	<i>Tillandsia paucifolia</i>	Potbelly airplant	N				
x	x	x	<i>Tillandsia recurvata</i>	Ball-moss	N				
x	x	x	<i>Tillandsia setacea</i>	Thin-leaved wild-pine	N				
x	x	x	<i>Tillandsia usneoides</i>	Spanish-moss	N				
x	x	x	<i>Tillandsia utriculata</i>	Giant wild-pine, Giant airplant	N		E		
x	x	x	<i>Torenia crustacea</i> (=Lindernia crustacea)	Malaysian false pimperl		√			
x	x	x	<i>Toxicodendron radicans</i>	Eastern poison-ivy	N				
		x	<i>Trichostema dichotomum</i>	Forked blue-curls	N				
x			<i>Triplasis purpurea</i>	Purple sandgrass	N				
		x	<i>Tripsacum dactyloides</i>	Fakahatcheegrass, Eastern gamagrass	N				
	x		<i>Typha domingensis</i>	Southern cat-tail	N				
x	x	x	<i>Urena lobata</i>	Caesarweed		√			II
		x	<i>Urochloa arrecta</i>	Signalgrass		√			

Railhead Scrub Preserve Plant List 2020

2006	2009	2020	Scientific Name (prior name)	Common Names	Native	Not Native	State	FNAI	FLEPPC
x			<i>Urochloa distachya</i> (=U. <i>subquadriflora</i>)	Signalgrass		√			
x	x	x	<i>Urochloa maxima</i> (=Panicum <i>maximum</i>)	Guineagrass		√			II
		x	<i>Urochloa mutica</i>	Paragrass		√			I
	x		<i>Utricularia cornuta</i>	Horned bladderwort	N				
	x		<i>Utricularia gibba</i>	Cone-spur bladderwort, Humped bladderwort	N				
		x	<i>Utricularia simulans</i>	Fringed bladderwort	N				
x	x	x	<i>Utricularia subulata</i>	Zigzag bladderwort	N				
x	x	x	<i>Vaccinium myrsinites</i>	Shiny blueberry	N				
x	x	x	<i>Vicia acutifolia</i>	Sand vetch, Fourleaf vetch	N				
	x	x	<i>Vigna luteola</i>	Cow-pea, Hairypod cowpea	N				
	x	x	<i>Viola lanceolata</i>	Bog white violet	N				
x	x	x	<i>Vitis rotundifolia</i>	Muscadine, Muscadine grape	N				
x		x	<i>Vittaria lineata</i>	Shoestring fern	N				
	x	x	<i>Waltheria indica</i>	Sleepy morning	N				
x	x	x	<i>Woodwardia virginica</i>	Virginia chain fern	N				
x	x	x	<i>Ximenia americana</i>	Hog-plum, Tallowwood	N				
x	x	x	<i>Xyris ambigua</i>	Coastalplain yelloweyed grass	N				
x	x	x	<i>Xyris brevifolia</i>	Shortleaf yelloweyed grass	N				
x	x	x	<i>Xyris caroliniana</i>	Carolina yelloweyed grass	N				
x	x	x	<i>Xyris elliotii</i>	Elliott's yelloweyed grass	N				
x	x	x	<i>Xyris flabelliformis</i>	Savannah yelloweyed grass	N				
	x	x	<i>Xyris jupicai</i>	Richard's yelloweyed grass		√			
		x	<i>Xyris smalliana</i>	Small's yelloweyed grass	N				
	x		<i>Youngia japonica</i>	Rocketweed, Oriental false hawksbeard		√			
		x	<i>Yucca aloifolia</i>	Spanish bayonet, Aloe yucca	N				
	x		<i>Zoysia matrella</i> (=Zoisia <i>tenuifolia</i>)	Manilla templegrass		√			
Count									
302	330	400	497		385	112	13	6	43

State Codes: E=Endangered; T=Threatened
 FNAI Codes: S1=critically imperiled; S2=imperiled because of rarity; S3=very rare in Florida or restricted range
 FLEPPC Codes: Category I = species has altered native plant communities; Category II = species with increasing abundance or frequency

Sources. Scientific plant names and Native/Not-Native status is according to the Atlas of Florida Plants website as of July 2020. State status is from Florida Department of Agriculture and Consumer Services 2018 list. FNAI category is from Florida Natural Areas Inventory April 2019 list. FLEPPC category is from the Florida Exotic Pest Plant Council 2019 list.