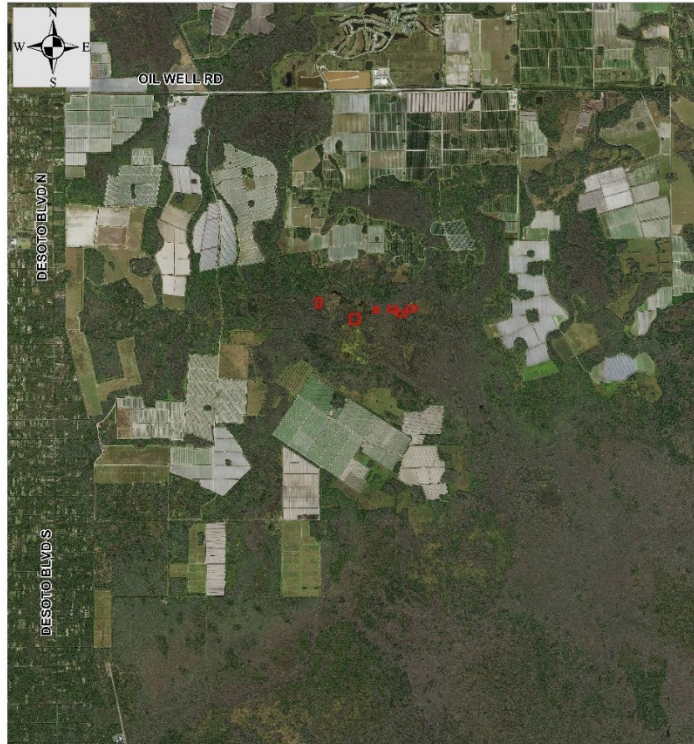


# Conservation Collier Camp Keais Strand Project Parcels



## Extended Interim Management Plan

Fourth Extension

Revised September 2023

BCC Approved 1/23/2024

Prepared By:

Collier County's Conservation Collier Program

Development Review Division

3300 Santa Barbara Blvd.

Naples, FL 34116

## Table of Contents

1.0 Purpose and Scope of the Interim Management Plan.....	3
2.0 Management Authority and Responsibilities .....	3
3.0 Interim Site Plan .....	4
3.1 Location and Site Description .....	4
3.2 Signage.....	4
3.3 Easements, Concessions or Leases .....	4
3.4 Structures.....	4
3.5 Surrounding and Adjacent Land Uses.....	4
4.0 Interim Management Objectives .....	5
4.1 Natural Resource Protection.....	5
4.2 Site Security.....	7
4.3 Exotic Vegetation Removal and Maintenance Plan.....	7
4.4 Cultural, Historical and Archaeological Resource Protection.....	7
4.5 Public Access.....	7
4.6 Site Monitoring Plan.....	7
4.7 Partnerships.....	7
5.0 Exhibits.....	8
EXHIBIT 1: Location Map	
EXHIBIT 2: Aerial Map	
EXHIBIT 3: Estimated Cost Table	
EXHIBIT 4: SFWMD and Conservancy Ownerships	
EXHIBIT 5: Implementation Timeline	

## 1.0 Purpose and Scope of the Interim Management Plan

The Camp Keais Strand project consists of 6 parcels totaling 32.5 acres within the linear wetland feature known as Camp Keais Strand. The Strand is a Rural Lands Stewardship Area (RLSA) Flowway Stewardship Area (FSA). Three of the parcels are contiguous and three are non-contiguous. The properties were acquired between December 2008 and June 2009 for \$2,500 per acre. Because there is no legal access established to the properties and physical access to this area is dangerous and difficult, staff has not visited the properties other than to view them from above by airplane.

Folios and acreage:

- 00229080005 – 5 acres
- 00228760009 – 10 acres
- 00229880001 – 2.5 acres
- 00231080006 – 5 acres
- 00230240009 – 5 acres
- 00229720006 – 5 acres

This extended interim management plan is intended to comply with the Conservation Collier ordinance which requires that an Interim Management Plan (IMP) be prepared, though lack of access to the properties prohibits staff from developing a plan for management actions. This extended IMP is also intended to be a means for revisiting these parcels every two years to determine if circumstances have changed and access for management is warranted and effective and efficient management actions can be taken to benefit these parcels. This document is intended to be the precursor to a final management plan, in the event that access can be developed.

### Key Interim Management Objectives

1. Monitor the native habitat on site via yearly aerial photography
2. Explore opportunities for sale to or partnerships with another conservation agency or organization

### Action Plan

- 1a. Review aerials as they become available annually from the Collier County Property Appraiser's Office to determine if there have been any changes to the area and if access potential has changed. Document any changes.
- 2a. Make contact with other conservation agencies and organizations with a presence in Collier County to determine if transfer to another agency for perpetual conservation would be appropriate. If such potential is realized, approach the Board of County Commissioners for direction. Contact SFWMD and the Conservancy of Southwest Florida annually to determine if there is potential for access or partnership of some kind for monitoring.

## 2.0 Management Authority and Responsibilities

The Collier County Development Review Division, Conservation Collier Program, will be solely responsible for the Camp Keais Strand project until determination of another course of action.

### **3.0 Interim Site Plan**

#### **3.1 Location and Site Description**

The Camp Keais Strand project parcels are located south of Oil Well Road and east of Desoto Boulevard in Sections 31 and 32, Township 48 South, Range 29 East. They are situated within the Camp Keais Strand, a linear wetland feature that extends from Lake Trafford on the north and flows south through lands designated in the Collier County Land Development Code (Sec. 4.08.02) as the Rural Lands Stewardship RLSA Zoning Overlay District. Within this district, lands are further designated as Stewardship Sending Areas (SSA) and Stewardship Receiving Areas (SRA), and further into flowway and habitat stewardship areas. These parcels are within SSA/flowway Stewardship designated lands. The parcels are located outside of lands with overlay zoning of Special Treatment (ST) and not within the County's Natural Resource Protection Areas (NRPA). Surrounding lands are zoned as agricultural and mostly owned in section-sized parcels and farmed by agribusiness.

The Camp Keais Strand carries surface water from the Lake Trafford and Corkscrew Swamp areas southward through the Florida Panther National Wildlife Refuge and the Fakahatchee Strand Preserve State Park into the Gulf of Mexico at the Ten Thousand Islands National Wildlife Refuge in Collier County, Florida.

To the best of staff knowledge as observed in airplane flyover in 2008, the parcels are comprised of cypress forest, freshwater marsh and mesic pine flatwood vegetation communities.

#### **3.2 Signage**

Signage is not necessary at present because the parcels are very remote and there is no known public visitation occurring.

#### **3.3 Easements, Concessions or Leases**

There are no known Easements, Concessions or Leases on the parcels owned by Collier County.

#### **3.4 Structures**

No structures are known to be currently present on the parcels. No structures will be erected within the time span of this interim management plan.

#### **3.5 Surrounding and Adjacent Land Uses**

Lands directly adjacent to the acquired Camp Keais project parcels are within the Camp Keais Strand and are all undeveloped wetlands. Lands within surrounding sections are a mixture of farmed and undeveloped natural lands. Most of the land in the vicinity is owned by large agribusiness in section-sized parcels. The exception is that portions of the two Sections where these parcels are located, Sections 31 and 32, have been subdivided into parcels sized from under 1 acre to 80 acres which are owned by private individuals and organizations.

The Conservancy of SW Florida owns 20 acres in Section 32, some of which are adjacent to the Conservation Collier parcels. In 2007 the South Florida Water Management District (SFWMD) acquired 60 acres of fee simple lands in Section 31, just west of the westernmost parcel in the Camp Keais project. See Exhibit 4 for map of SFWMD and Conservancy of SW Florida-owned parcels.

The SFWMD, along with all other Florida Water Management Districts, underwent an assessment of its fee-owned land holdings during 2013 in order to determine which parcels met its mission-critical responsibilities. Lands that were determined not to directly support the SFWMD's core mission could be considered for alternative uses or recommended for surplus. A public evaluation process included the 60 acres owned by SFWMD in Camp Keais Strand. The Summary of comments and recommendations resulting were that the 60 acres "may be good candidates for exchange with Collier County." As part of the assessment, SFWMD staff noted that the parcels lack any means of direct access and are consequently difficult to manage.

#### 4.0 Interim Management Objectives

##### 4.1 Natural Resource Protection

###### **Existing Vegetation:**

Staff used two methods to determine native plant communities present: review of South Florida Water Management District (SFWMD) electronic databases for Department of Transportation's Florida Land Use, Cover and Forms (FLUCCS) (1994/1995); and photos from an airplane flyover in 2008.

###### **The electronic database identified:**

- FLUCCS 621 – Cypress
- FLUCCS 641 – Freshwater marsh
- FLUCCS 643 – Wet prairie
- FLUCCS 624 – Cypress-pine-cabbage palm
- FLUCCS 617 – Mixed wetland hardwoods
- FLUCCS 411 – Pine flatwood

###### **The following native plant communities were observed during airplane flyover:**

- FLUCCS 621 – Cypress
- FLUCCS 641 – Freshwater marsh
- FLUCCS 411 – Pine flatwood

**Unique Natural Features:** The parcels lie within areas containing surface wetlands and cypress strands. Particular features are not known.

**Possible Listed Plant Species:** Based on the Florida Natural Areas Inventory online Florida Biodiversity Matrix (2020) <http://www.fnai.org/biointro.cfm>, the following plants are likely or potentially present on the Camp Keais parcels:

Common name	Scientific name	State Rank	State Listing	Federal Listing
nodding pinweed	<i>Lechea cernua</i>	S3	T	n/a
clamshell orchid	<i>Encyclia cochleata var. triandra</i>	S2	E	n/a
Small's flax	<i>Linum carteri var. smallii</i>	S1	E	n/a
celestial lilly	<i>Nemastylis floridana</i>	S2	E	n/a
ghost orchid	<i>Dendrophylax lindenii</i>	S2	E	n/a
Florida royal palm	<i>Roystonea regia</i>	S2	E	n/a

S2-State imperiled; S3-State rare, restricted or otherwise vulnerable to extinction; E-Endangered; T-Threatened

**Documented Listed Wildlife Species:** Based on the Florida Natural Areas Inventory online Florida Biodiversity Matrix (2020), the following wildlife species are documented:

Common name	Scientific name	State Rank	State Listing	Federal Listing
Florida panther	<i>Puma concolor coryi</i>	S1	E	E

S1-State critically imperiled; E-Endangered

**Possible Listed Wildlife Species:** Based on the Florida Natural Areas Inventory online Florida Biodiversity Matrix (2020), the following wildlife species are either likely or potentially present on the Camp Keais parcels:

Common name	Scientific name	State Rank	State Listing	Federal Listing
Florida black bear	<i>Ursus americanus floridanus</i>	n/a	n/a	n/a
wood stork	<i>Mycteria americana</i>	S2	E	E
Florida burrowing owl	<i>Athene cunicularia floridana</i>	S3	T	n/a
eastern indigo snake	<i>Drymarchon couperi</i>	S3	T	T
little blue heron	<i>Egretta caerulea</i>	S4	SSC	n/a
snowy egret	<i>Egretta thula</i>	S3	SSC	n/a
Florida bonneted bat	<i>Eumops floridanus</i>	S1	E	E
gopher tortoise	<i>Gopherus polyphemus</i>	S3	T	C
red-cockaded woodpecker	<i>Picoides borealis</i>	S2	E	E
snail kite	<i>Rostrhamus sociabilis plumbeus</i>	S2	E	E
Rafinesque's Big-eared Bat	<i>Corynorhinus rafinesquii</i>	S2	n/a	n/a
Swallow-tailed Kite	<i>Elanoides forficatus</i>	S2	n/a	n/a
Florida Long-tailed Weasel	<i>Mustela frenata peninsulæ</i>	S3	n/a	n/a

Florida Scrub Lizard	<i>Sceloporus woodi</i>	S2S3	n/a	n/a
Mangrove Fox Squirrel	<i>Sciurus niger avicennia</i>	S2	T	n/a

S1-State critically imperiled; S2-State imperiled; S3-State rare, restricted or otherwise vulnerable to extinction; S4-State apparently secure; E-Endangered; T-Threatened; SSC-Species of Special Concern

#### 4.2 Site Security

No site security measures are planned.

#### 4.3 Exotic Vegetation Removal and Maintenance Plan

Exotics will not be managed on these parcels due to access difficulties, wetland conditions and the presence of significant surrounding seed source. Once exotic management starts, it must be continued or exotics will re-grow rapidly. Until reasonable access can be secured and it is determined that ongoing exotic maintenance is feasible and warranted no land management or maintenance will occur.

#### 4.4 Cultural, Historical and Archeological Resource Protection

The Camp Keais Strand parcels are not within an area of historical and archaeological probability, and no historical or archaeological sites appear to be present in the property. The County will notify the Division of Historical Resources immediately if evidence is found to suggest any archaeological or historic resources are present on County-owned lands. If such properties are identified on-site, staff shall cordon off the area, and a professional survey and assessment shall be instituted. The archaeologist shall prepare a report outlining results of the assessments and issue recommendations to County staff about management of any sites discovered, per provisions of the Land Development Code Section 2.2.25. This report shall be sent to the Division of Historical Resources. The County shall cooperate fully with direction from the Division of Historical Resources on the protection and management of archaeological and historical resources. The management of these resources will comply with the provisions of Chapter 267, Florida Statutes, specifically Sections 267.061 2 (a) and (b).

The collection of artifacts or the disturbance of archaeological and historic sites within the Camp Keais Strand parcels will be prohibited unless prior authorization has been obtained from the Collier County Board of County Commissioners and the Department of State, Division of Historical Resources.

#### 4.5 Public Access

Public access is not possible at this time due to the remote location and lack of access roads.

#### 4.6 Site Monitoring Plan

Monitoring of the parcels shall consist of review of aerial photographs annually to determine if there have been any changes.

#### 4.7 Partnerships

The SFWMD and the Conservancy of Southwest Florida are potential partners.

## 5.0 Exhibits

### EXHIBIT 1: Location Map

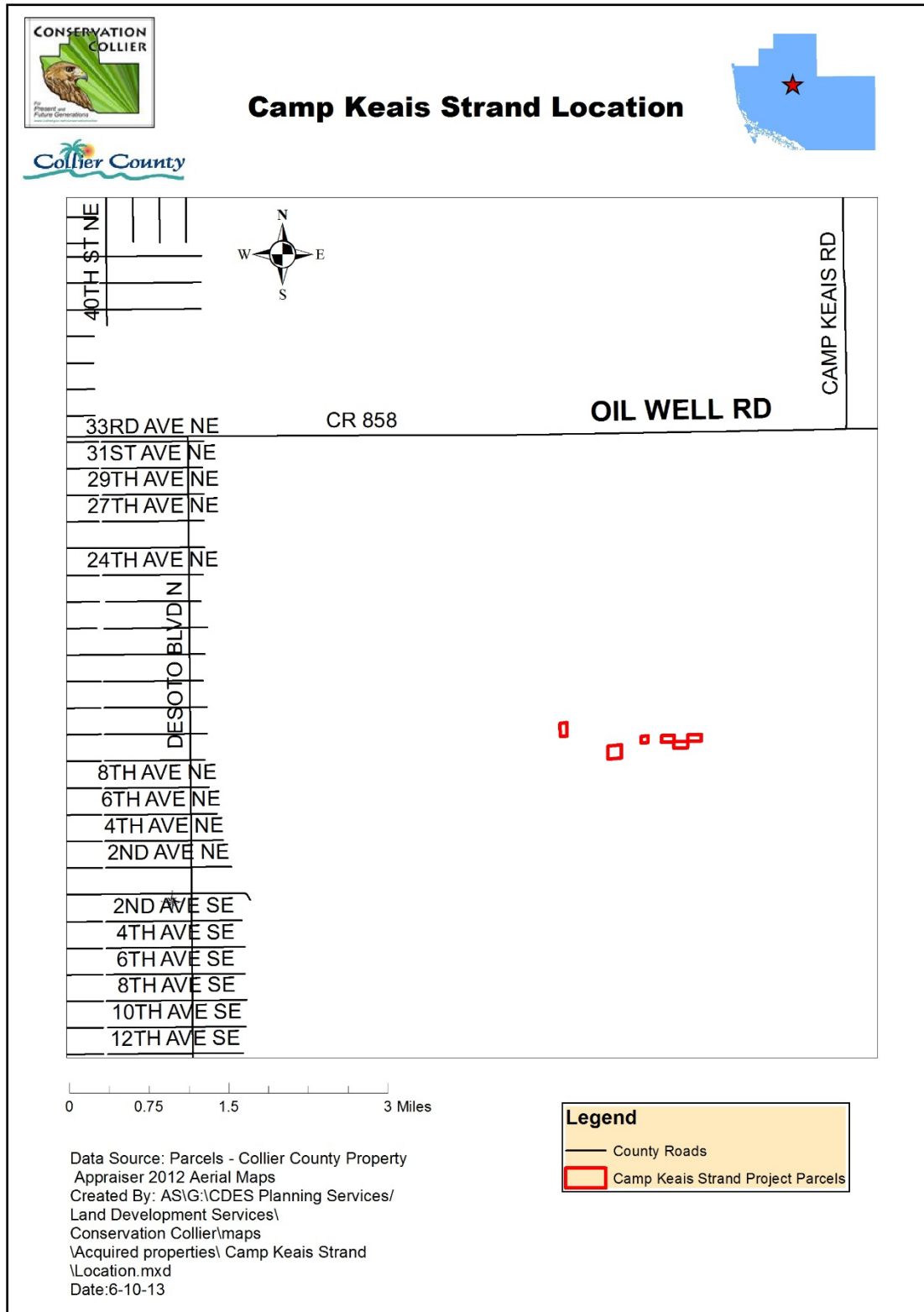


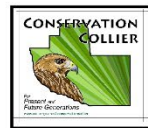


EXHIBIT 2: Aerial Map

### Camp Keais Strand Aerial



0 0.25 0.5 Miles



Data Source: Parcels - Collier County Property Appraiser 2019 Aerial Maps  
Created By: MH\G:\Parks and Recreation\Conservation Collier\Land Management\  
Camp Keais Strand\maps\ Camp Keais Strand Aerial 2020.mxd and jpg Date:2/14/2020

EXHIBIT 3: Zoning Overlay Map

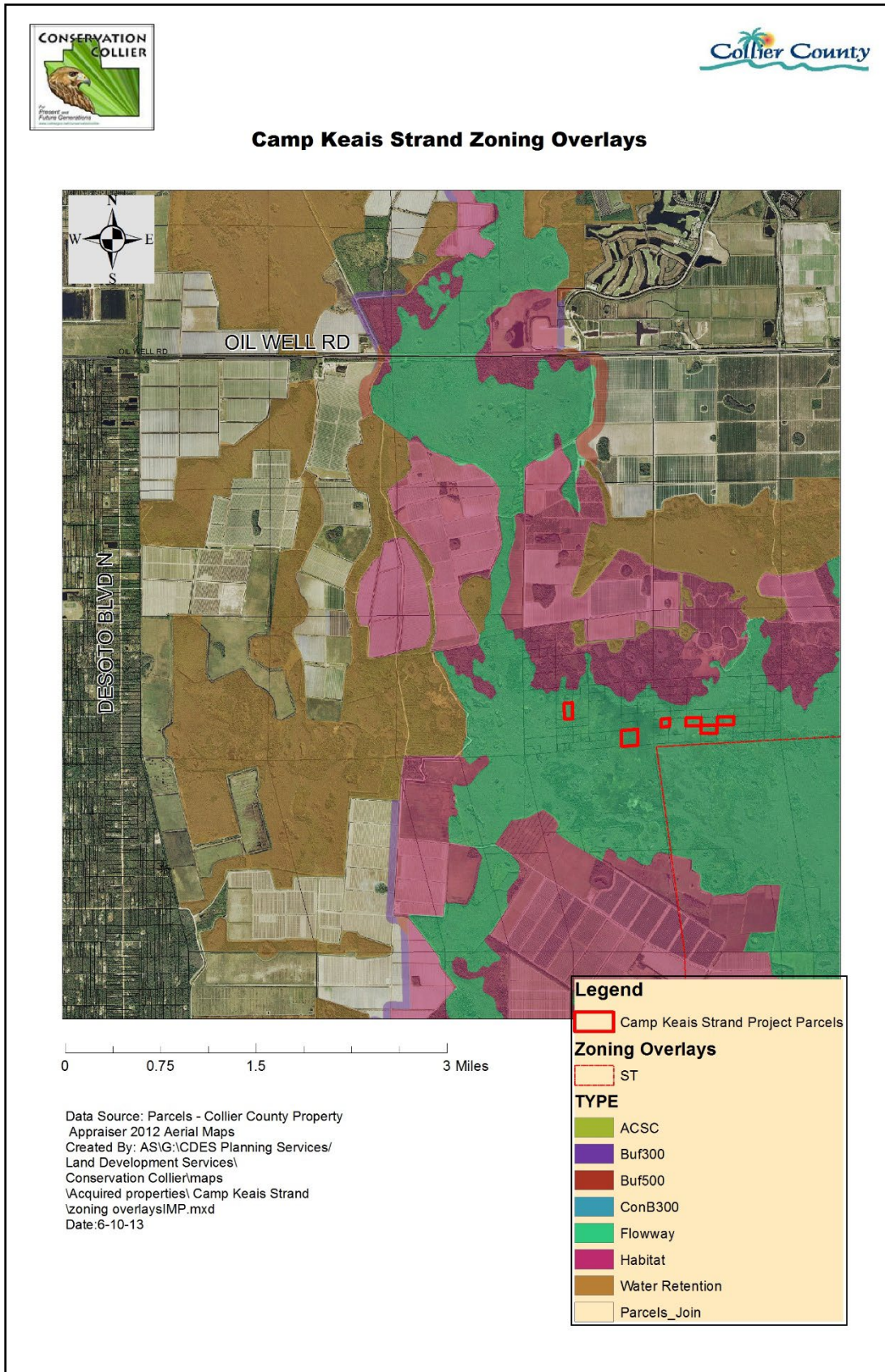


EXHIBIT 4: SFWMD and Conservancy Ownerships

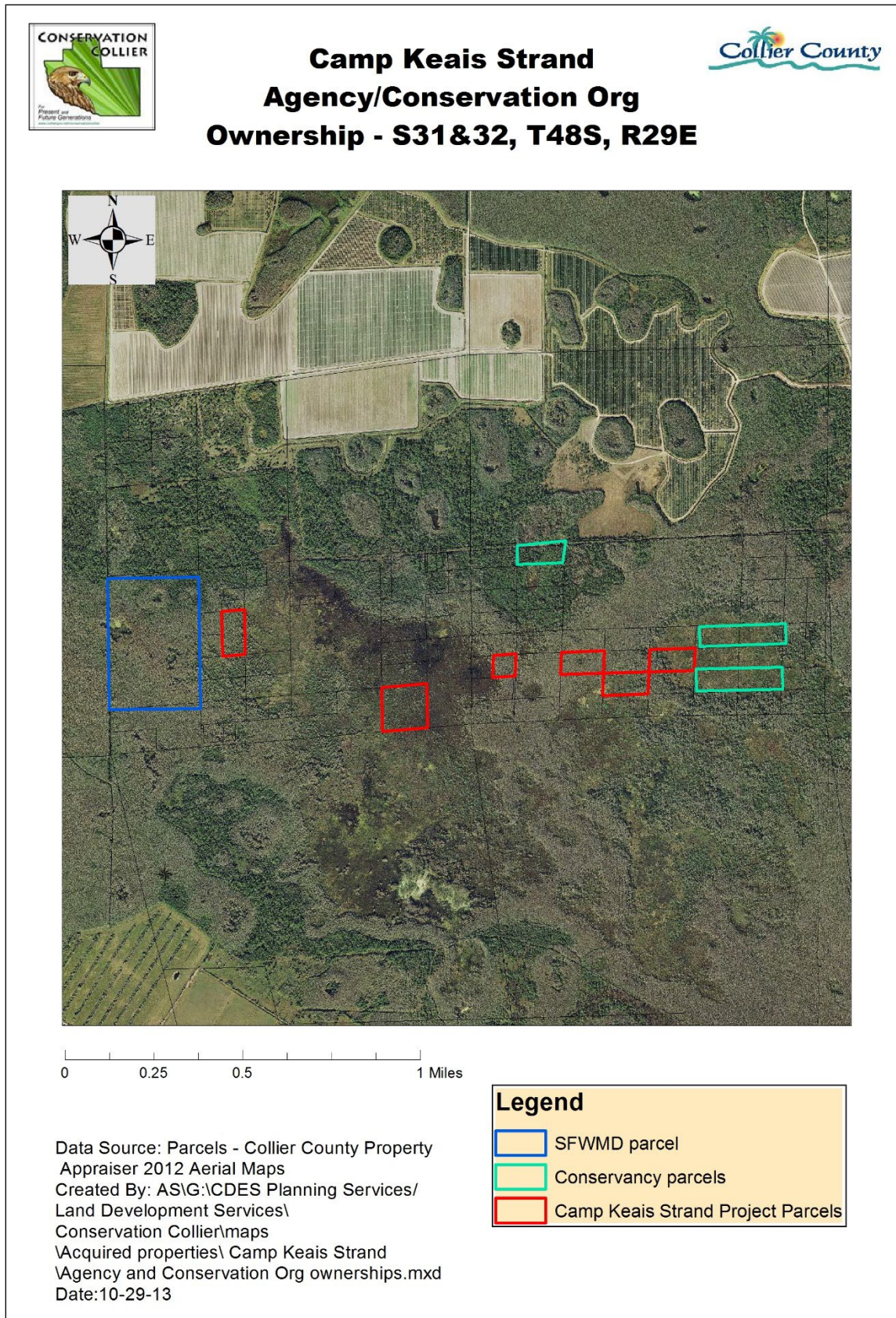


EXHIBIT 5: Estimated Cost Table

<b>Management Element</b>	<b>Initial Cost</b>	<b>Annual Recurring Costs</b>	<b>Comments</b>
Exotics Control	tbd	tbd	The extent of exotic infestation is unknown as the property is inaccessible
Conservation Collier signs	0		Signs are not necessary as the parcels are inaccessible
<b>Total</b>	<b>tbd</b>	<b>tbd</b>	<b>Management is not feasible at this time</b>

EXHIBIT 6: Estimated Implementation Time Line

	<b>Monitoring Site Visit</b>	<b>Seek Partnerships</b>	<b>Exotic Plant Treatment</b>	<b>Completion of final management plan (or update of interim management plan if acquired parcels are still scattered)</b>
<b>Oct-23</b>				
<b>Jan-24</b>				
<b>April-24</b>				
<b>July-24</b>		<b>x</b>		
<b>Oct-24</b>				
<b>Jan-25</b>				
<b>April-25</b>				
<b>July-25</b>		<b>x</b>		
<b>Oct-25</b>				<b>x</b>