

Parcel Name: Camp Keais Strand

Target Protection Area: FSA/HSA

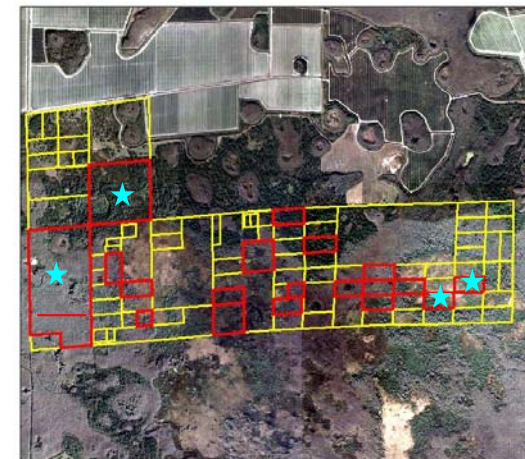
Acreage: 84.77 acres

Estimated Market Value: 2005: \$1,500 - \$2,000 per acre; 2007: \$1,800 - \$2,000 per acre; 2008: \$2,500 per acre

Highlights:

- **Location:** Rural Lands Flow-way Stewardship and Habitat Stewardship areas, S31 &32, T48, R29
- **Met 5 out of 6 Initial Screening Criteria:** Native habitat-yes; human social values-no; water resource values-yes; biodiversity-yes; connectivity-yes; within another Agency project boundary-yes (Florida Forever & SFWMD)
- **Habitat:** Cypress, freshwater marsh, small portion of pine flatwood
- **Listed species:** bird rookery observed and documented, listed wading birds and alligators likely
- **Water Resource Values:** depressional and slough soils, minimal upland soils, wetlands onsite, low Tamiami aquifer recharge, moderate to surficial aquifer recharge
- **Restoration needs:** none
- **Connectivity:** Within identified flow-way and habitat stewardship areas, approx. 3 miles north of and ecologically connected to Florida Panther NWR
- **Utilities/Transportation Interest?** Utilities-No; Transportation-No
- **Access:** none at present
- **Restoration needs:** none
- **Management Issues / Estimated costs:** not able to access for management- No estimated costs until well into the future
- **Partnership Opportunities:** The state (Division of State Lands and South Florida Water Management District) does not have interest in buying them despite Project status (Florida Forever A-list).
- **Stewardship Credits associated**
- **Parcels on map with blue stars have been sold since originally offered or owners are no longer interested in offering.**
- **Approx 85 acres are currently offered (red parcels on map without blue stars)**

Conservation Collier Camp Keais Aerial Map



Surrounding land uses:

- **North:** Agricultural operations and undeveloped wetlands
- **East:** Agricultural operations and undeveloped wetlands
- **South:** Agricultural operations, undeveloped wetlands and Florida Panther National Wildlife Refuge
- **West:** Agricultural operations and undeveloped wetlands

