

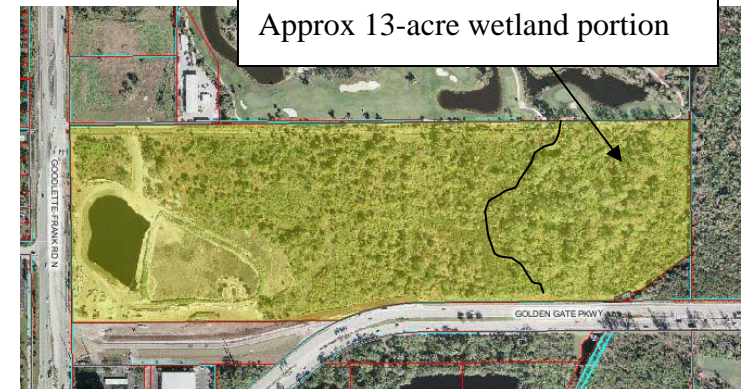
Parcel Name: Fleischmann parcel (Eastern wetland portion only)
 Estimated Value: 2007 - \$2,000,000

Target Protection Area: Urban

Acreage: 13+/- acres

Highlights:

- Location: North side of Golden Gate Parkway Extension where the Gordon River Channel passes under the roadbed.
- Met 5 out of 6 Initial Screening Criteria, native habitat-yes; human social values-yes; water resource values-yes; biodiversity-yes; connectivity-yes; within another Agency project boundary-no
- Habitat: Mixed wetland hardwoods and mangroves – substantial amount of exotics (50-75%)
- Listed species: Listed plant were observed. One listed bird species was observed-tricolor heron (State - SSC). FFWCC Species Richness score is 2-3 out of 10 (low)
- Water Resource Values: Contributes minimally to aquifer recharge, but has well field protection zone ST overlay and buffers Gordon River. Can be expected to contain some floodwaters. Acquisition could aid in water quality protection for Gordon River.
- Utilities/Transportation Interest: None
- Access: through Water Quality Park
- Restoration needs: None anticipated beyond exotic removal
- Management Issues / Estimated costs: Quarterly exotic management needed for several years,- Approx \$20,000 per year; Note approx 1300 feet of raised boardwalk and 3 pavilions shown on plan – estimated cost - \$700,000
- Partnership Opportunities: Potential to partner with Stormwater Dept. for ongoing exotic management; **Note: Stormwater has already received an approximate \$8 million FCT grant for the entire project including the wetlands portion.**
- TDRs associated: none – parcel within City of Naples jurisdiction
- Other: Stormwater is still in the permitting phase of the project, which includes the entire 50 acres upland and wetlands



Surrounding land uses:

- N - golf course and residential (Wilderness), vacant commercial (possible 72,000 sq. ft. office/medical bldg.), preserve (Grey Oaks)
- S - vacant commercial and Greenway Project, golf course & residential (Bear’s Paw)
- E - Bear’s Paw
- W – County’s Water Quality Park Project , school (Naples High) and commercial (Coastland Center).

